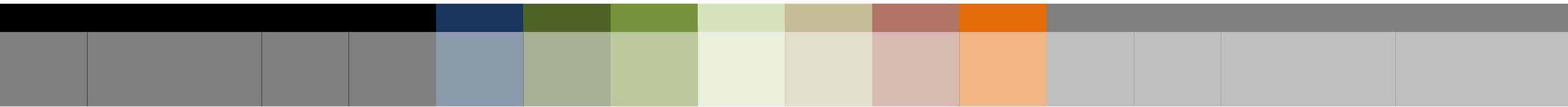


PERMIAN BASIN MPO POLICY BOARD PROJECT BRIEFING

Interregional Planning-Environmental Linkages (PEL) Study

SEPTEMBER 18, 2023



Board Presentation Agenda

- Project Overview
- PEL Study Results
- Recommendations

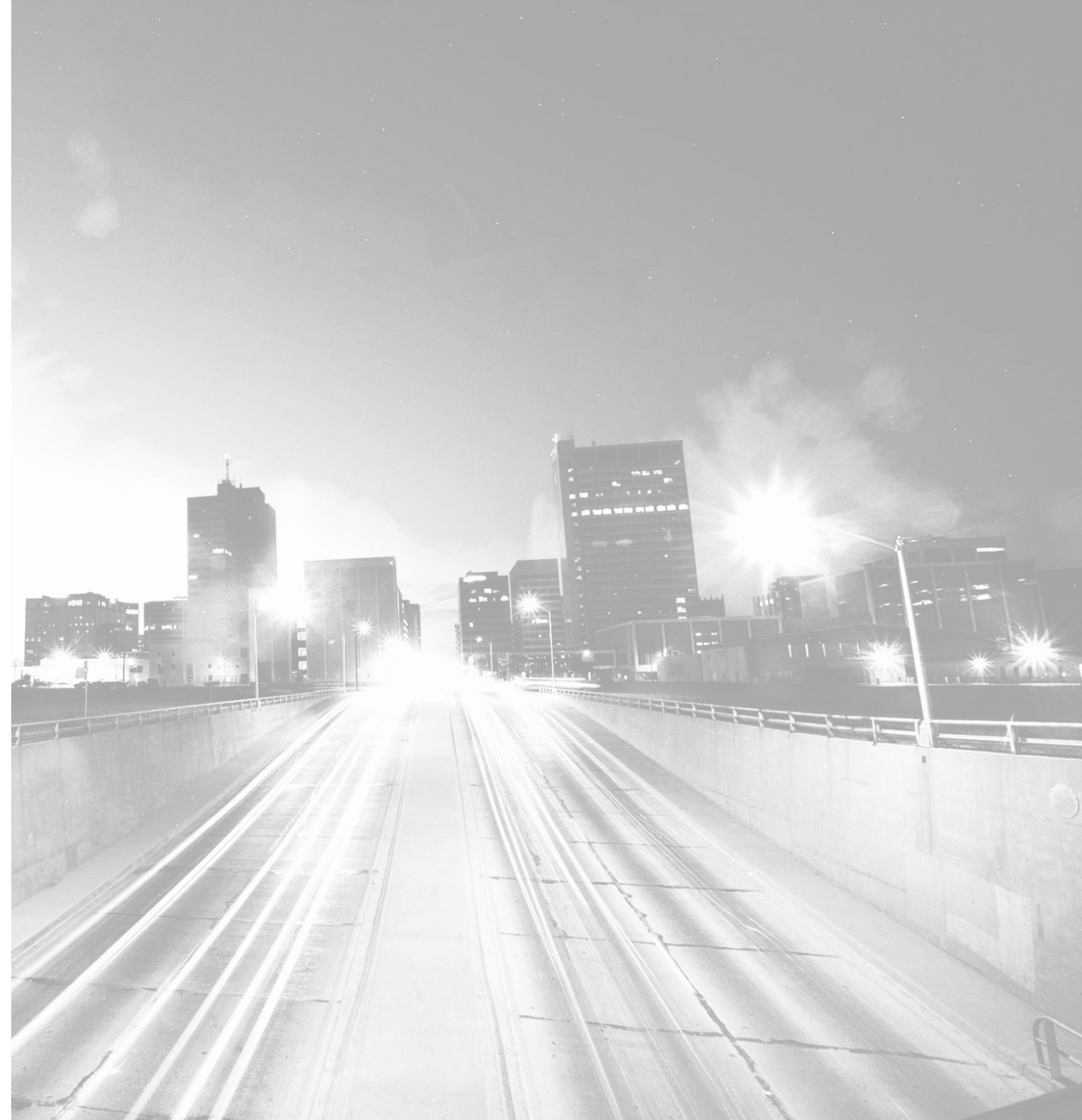


Project Overview



Study Basis

- Rapid regional growth and development
- Increased regional travel
- Diversification and increase of freight and goods movement
- Awareness of safety needs for all types of travelers



Traditional Planning Process

Project Team Develops Concepts

Public & Agencies Provide Feedback on Concepts

Project Team Refines Concepts Based on Feedback

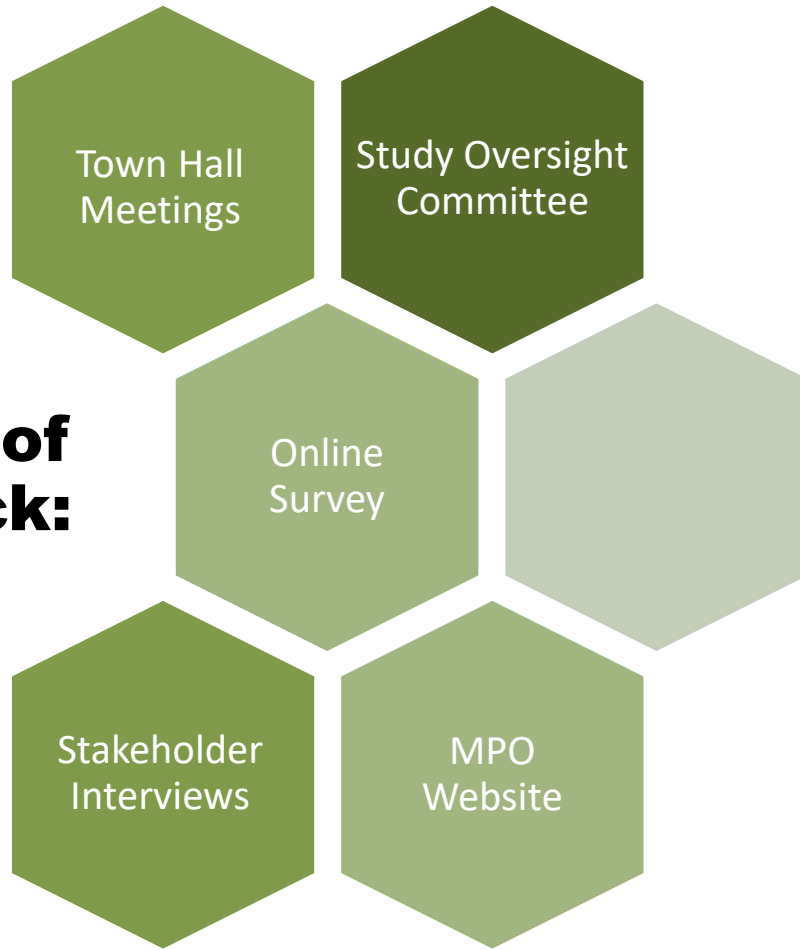
PEL Study Process

Public & Agencies Develop Initial Concepts

Project Team Expands & Analyzes Concepts

Public & Agencies Revisit Concepts with the Project Team

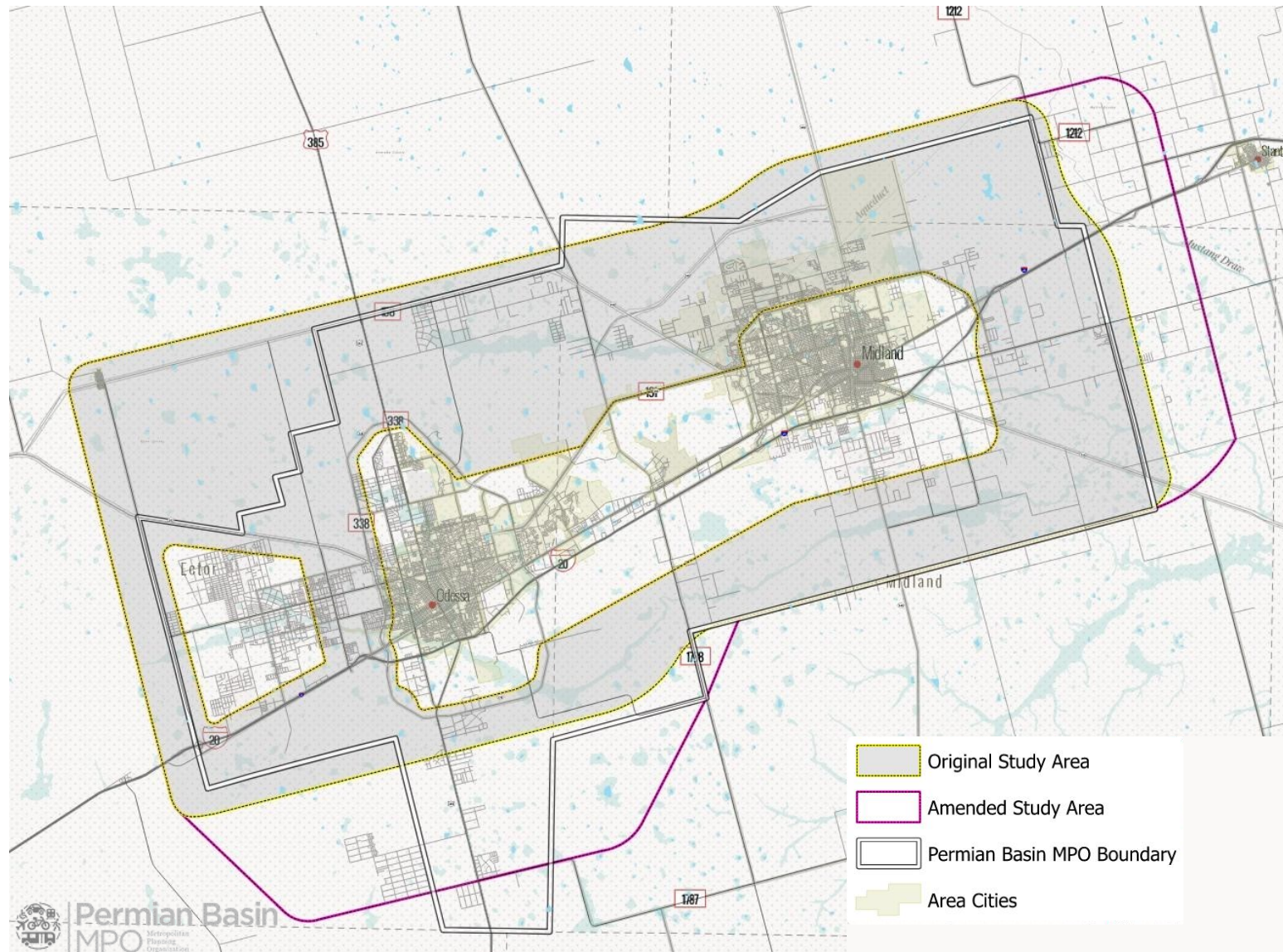
Sources of Feedback:



Outreach Efforts:



Study Area and Objectives



- Establish a common vision for an interregional transportation facility that will...
 1. Enhance safety and mobility
 2. Enable better movement of goods and services
 3. Provide a higher functional classification for more comprehensive service
- Identify potential corridors for future evaluation

Study Area and Objectives



- Region-wide shared vision
- Understanding study area stakeholder and partner capabilities/limitations
- Broad awareness and understanding of the area
- Collaboration tool to assist and facilitate orderly area development

PEL Study Process

Data Collection

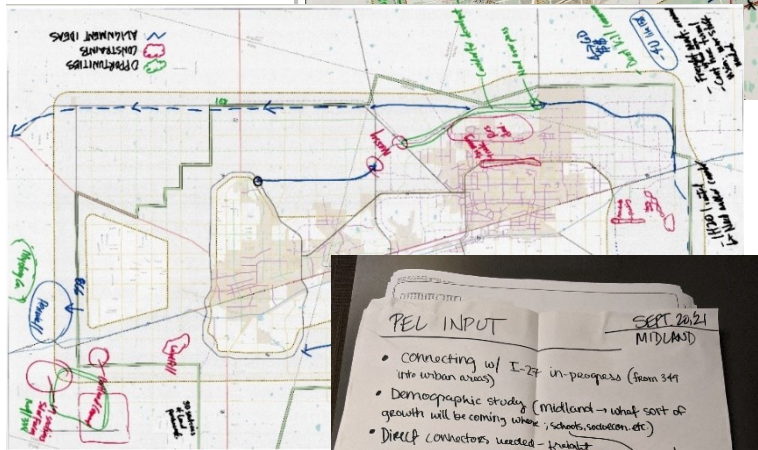
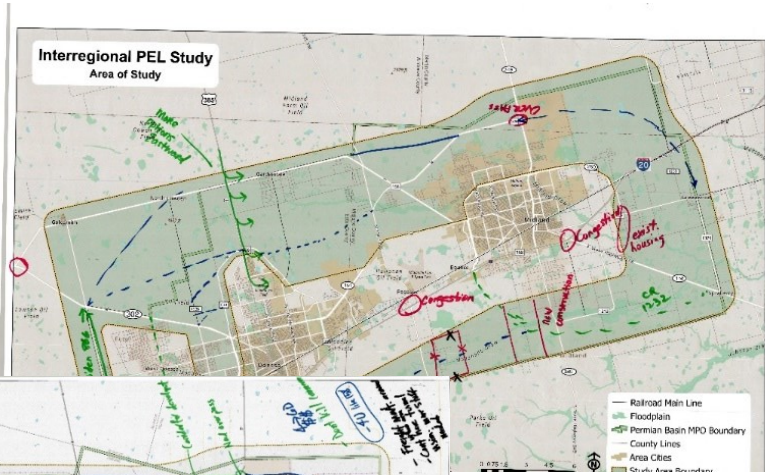
Public & Stakeholder Involvement

Purpose and Needs Assessment

Develop and Screen Potential Alternatives

Project Next Steps

Public & Stakeholder Input as the basis for Alternatives Development



PEL INPUT

SEPT 2021
MIDLAND

- Connecting w/ I-27 in progress (from 347 into urban areas)
- Demographic study (Midland → what sort of growth will be coming where, schools, services, etc)
- Direct connectors needed - transit
- Concentrate on northern connections
- Multi-modal opportunities where highways already exist
- ROW concerns → early acquisition - get ahead of growth

Support! and (house) hospitals in school zone

Interregional Corridor

What do you think of when you hear "Interregional Corridor"?

Write your answer on a post-it note and post here.

11/10/21
SEP 28
1:30 PM



PEL Study Timeline

2021

2022

2023

Data Collection

Purpose and Needs Assessment

Public and Stakeholder Engagement

Concept Development

Level 1 Analysis:
Corridor Screening

Level 2 Analysis:
Preliminary Evaluation

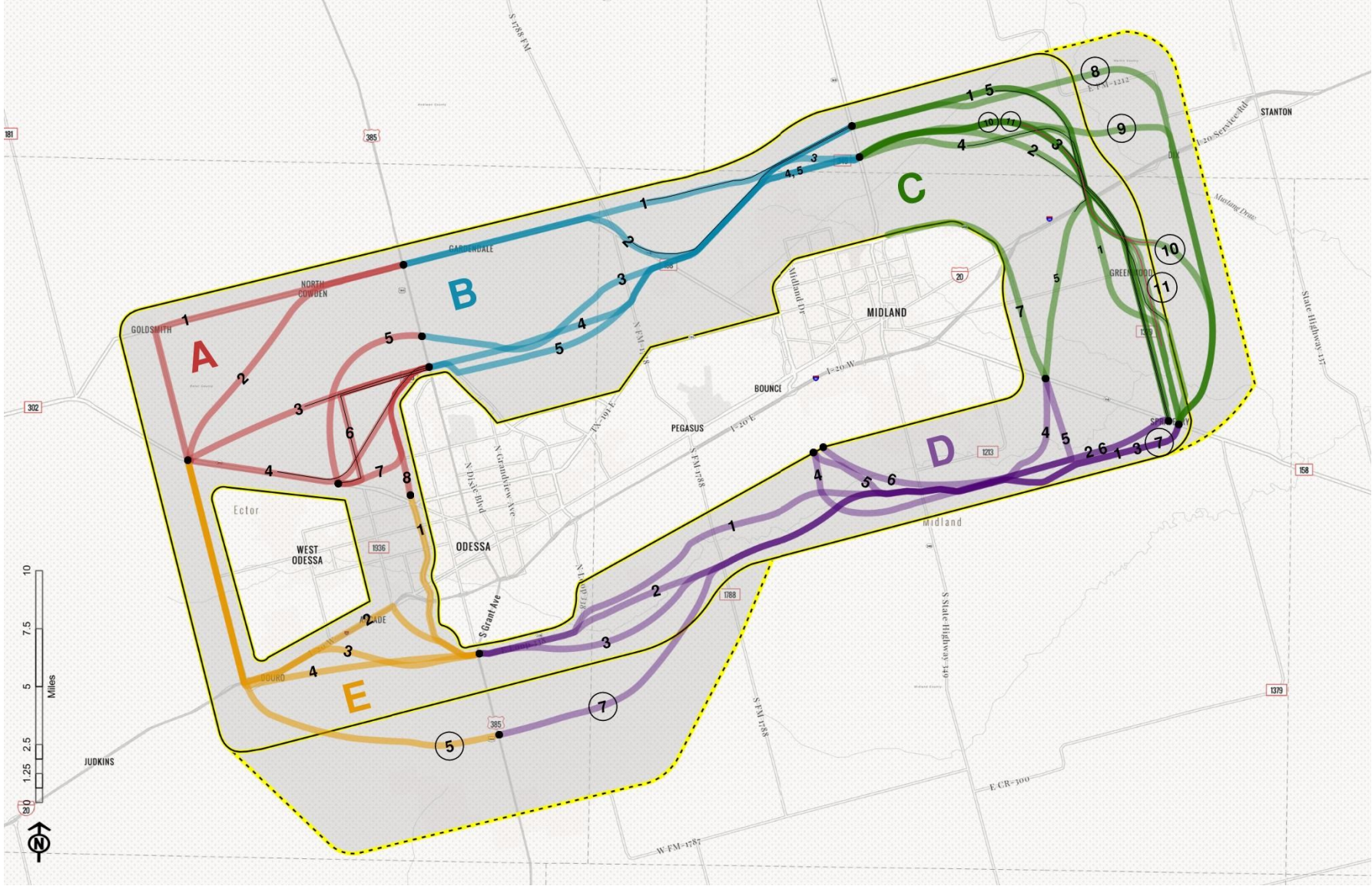
Level 3 Analysis:
Demand Modeling

Documentation

PEL Study Results

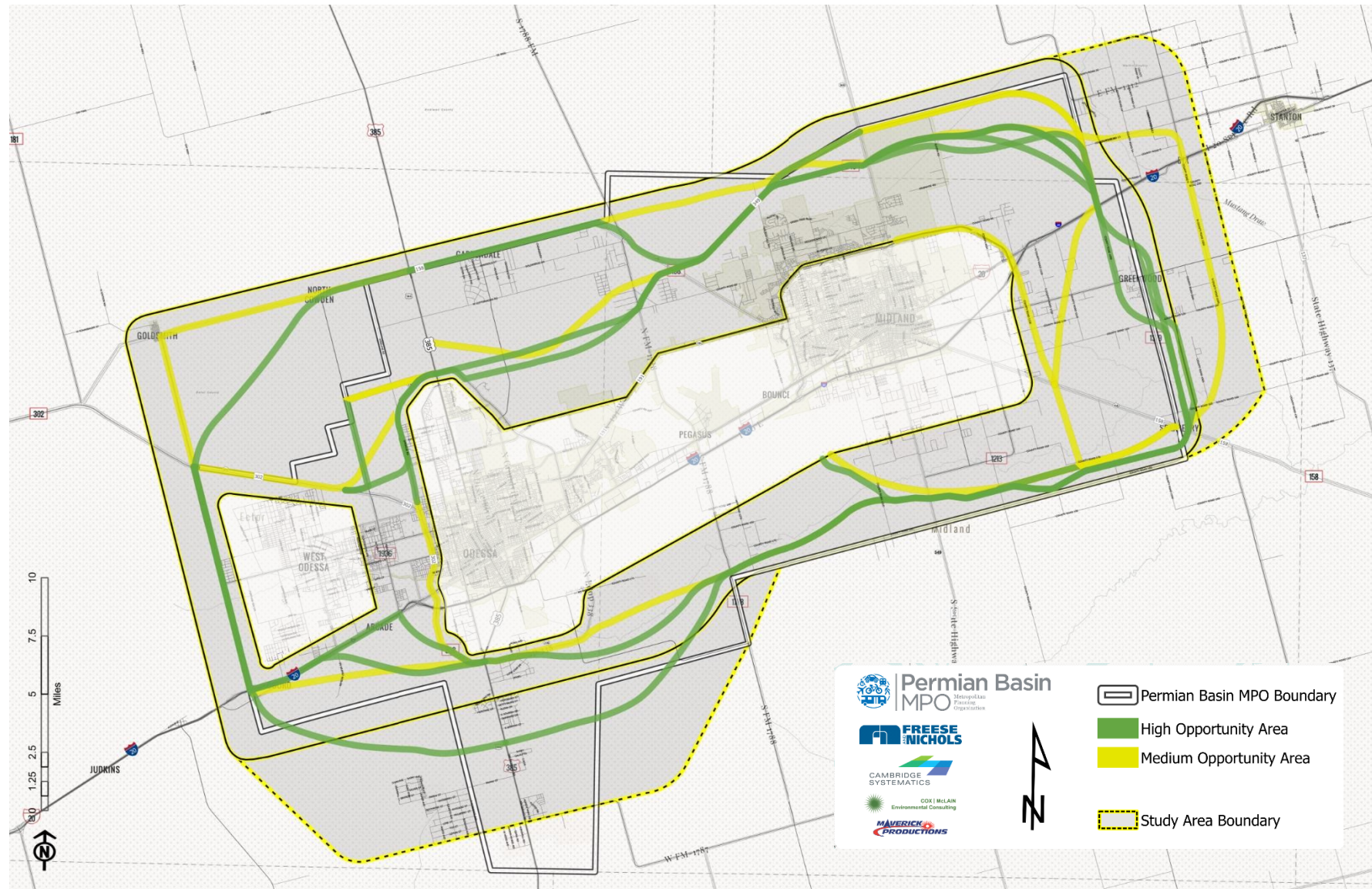


Regional Loop Concept Alternatives

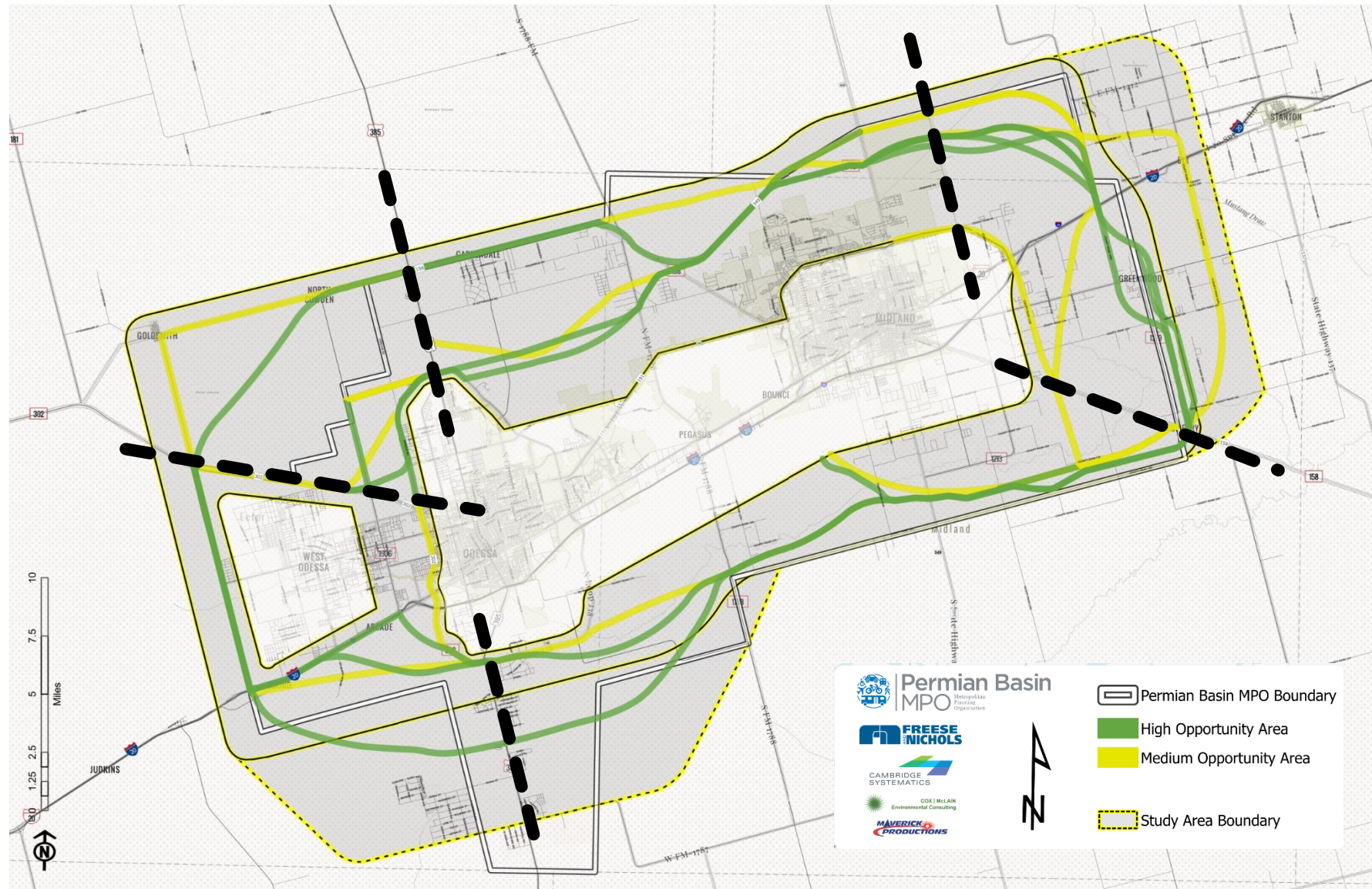


Criteria	Attribute Name	Resource Type/Measure	A1	A2	A3	A4	A5	A6	A7	A8	B1	B2	B3	B4	B5	C1	C2	C3	C4	C5	C6	D1	D2	D3	D4	D5	D6	E1	E2	E3	E4										
2. Consistency with Regional Plans and Infrastructure	2.1 Planned Systems																																								
	2.2 Existing Systems																																								
3. Modeling																																									
4. Natural Environmental Impacts	4.1 Archeological and Historical Sites	NRHP Property																																							
		NRHP District																																							
		TXDOT Historic Properties																																							
		TXDOT Historic Bridges																																							
		Historical Markers																																							
		DOE Eligible Points																																							
		DOE Eligible Polygons																																							
Archaeological Site																																									
Historic Highway Routes																																									
4.2 Oil and Gas	4.2 Oil and Gas	Surface Wells																																							
		Pipeline Conflicts																																							
		Storage Tanks																																							
		NHD Flowline																																							
		NHD Waterbody																																							
		NWI																																							
		TXNDD																																							
4.3 Wetlands or Major Water Features	4.3 Wetlands or Major Water Features	Cemeteries																																							
		100-year Floodplain																																							
		Park Areas																																							
4.4 Threatened and Endangered Species/Species of Concern	4.4 Threatened and Endangered Species/Species of Concern	Petroleum Storage Tank																																							
		Leaking Petroleum Storage Tank																																							
		Industrial and Hazardous Waste Corrective Action (IHWCA)																																							
4.5 Parks/Open Space/Floodplain	4.5 Parks/Open Space/Floodplain	Superfund Site																																							
		Landfill																																							
4.6 Hazardous Site/Landfills	4.6 Hazardous Site/Landfills	Center Pivot																																							
		Prime Farm Land/Farmland of Statewide Importance																																							
5. Social Environmental Impacts	5.1 Relocations/Displacements	5.1 Relocations/Displacements	Population + HHs in 2045																																						
			City Limits y/n																																						
	5.2 Area Development	5.2 Area Development	Public Buildings																																						
			Hospitals																																						
	5.3 Corridor Effect on Community Facilities and Sensitive Receptors	5.3 Corridor Effect on Community Facilities and Sensitive Receptors	Fire Stations																																						
Schools																																									
5.4 Corridor Effect on EJ and Vulnerable Populations	5.4 Corridor Effect on EJ and Vulnerable Populations	Block Groups w/ Minority Pop <50%																																							
5.5 Corridor Effect on Income Levels	5.5 Corridor Effect on Income Levels	Low Income Block Groups																																							
6. Right of Way, Public Support																																									
7.1 Economic Development	7.1 Economic Development	Conducive to ED and LU Compatibility																																							
7.1 Economic Development																																									
TOTAL (FINAL) - Collaborative Result			1	2	3	4	5	6	7	8	9	43	10	11	12	13	14	30	15	31	35	16	32	17	33	29	34	18	19	45	20	21	22	23	47	24	25	26	27	28	49

Study Results: Biggest Opportunities



Study Results: Biggest Opportunities

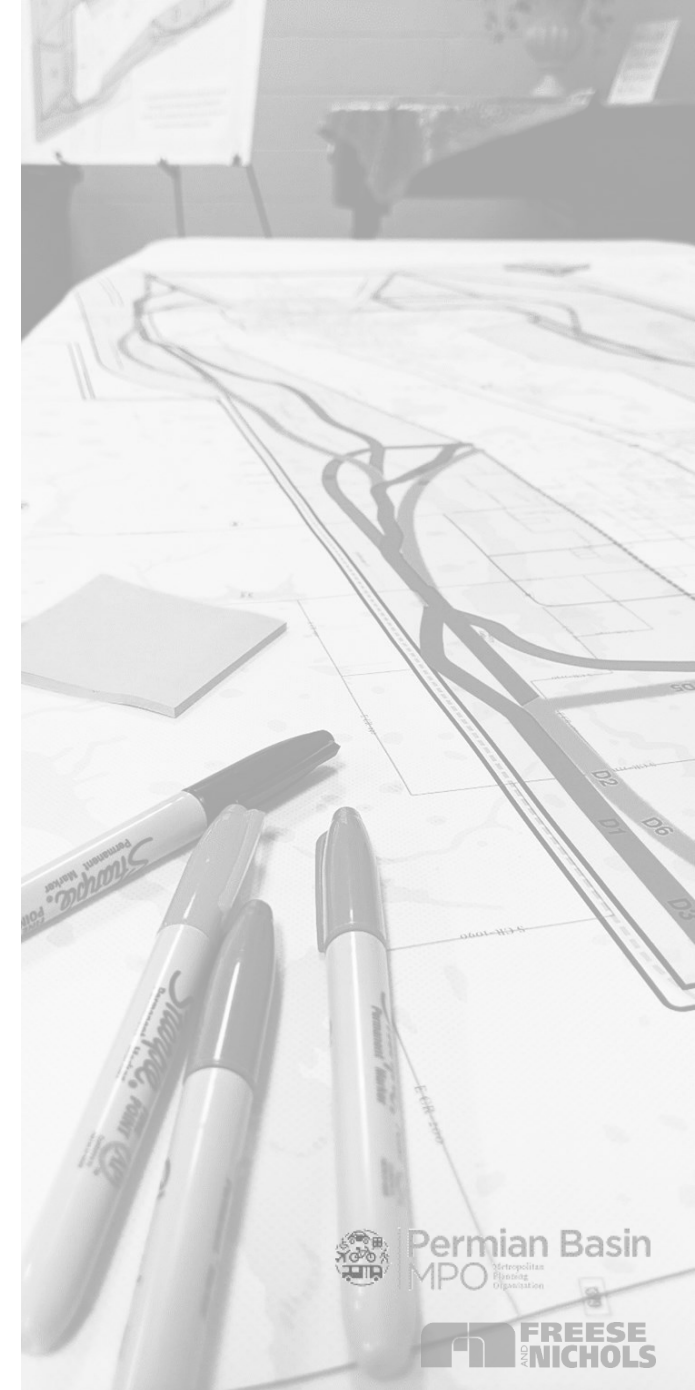


Recommendations



Recommendations

- **Request that the Board accept the work done through this study**
 - Continued study to advance project's development
- **MPO develops and advances a prioritization method for selection of a loop alignment**
 - Any follow up study should begin with the most opportunistic corridors (i.e., green)
 - Potential to integrate with regional project selection criteria
- Keep this interregional facility in conversation with Forts-to-Ports (I-14), Ports-to-Plains, and ongoing regional projects.



Next Steps

Near term (~2 years)

- Agency-led detailed environmental evaluation (TxDOT)
 - Compare no-build + build alternatives
 - Defined corridors of least impact
 - Field surveys; social, physical, & environmental; cumulative & indirect effects

Medium-term

- Formal Environmental Documentation/Public Hearing Process

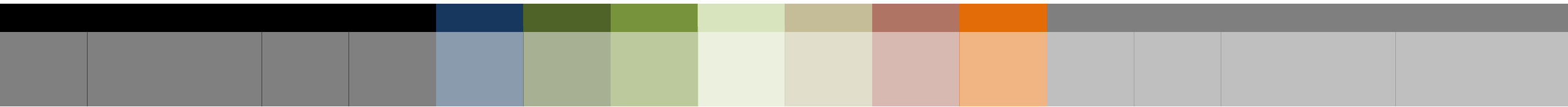
Long-term

- Corridor Design and Implementation

PERMIAN BASIN MPO POLICY BOARD PROJECT BRIEFING

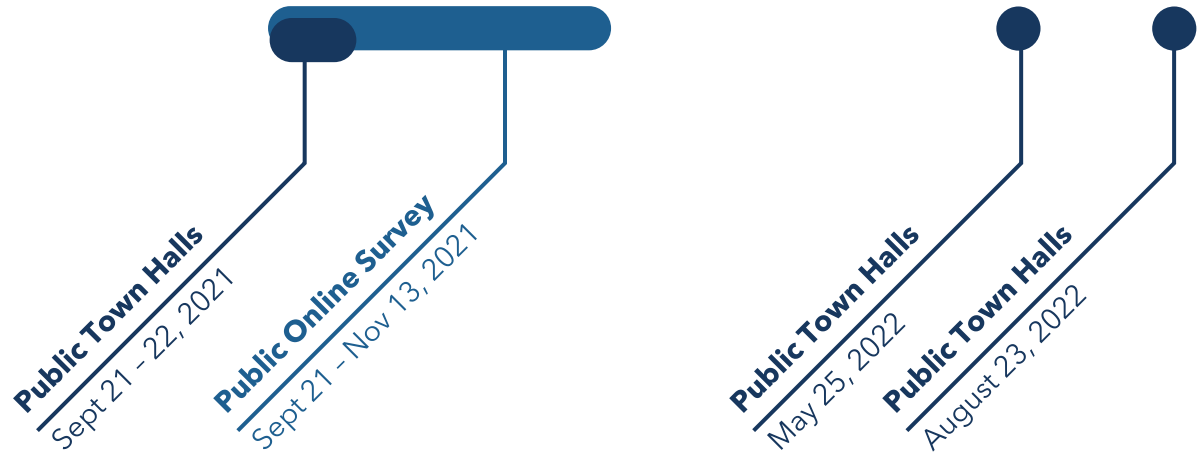
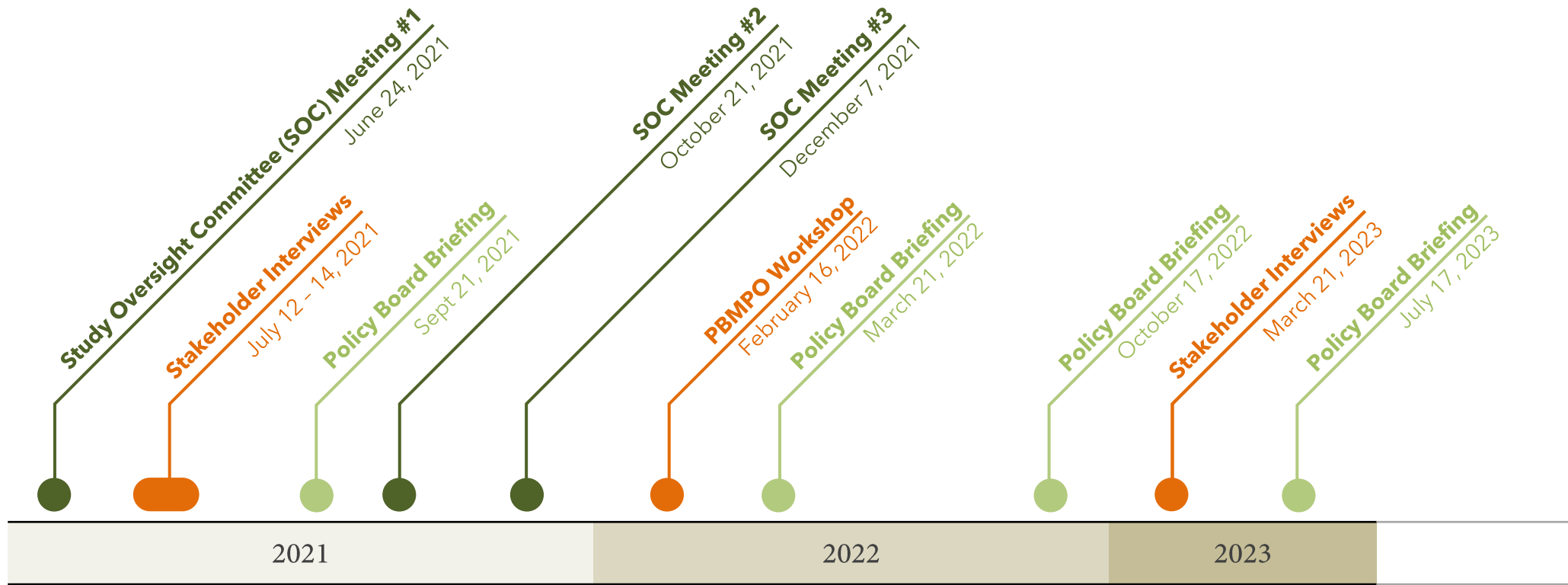
Interregional Planning-Environmental Linkages (PEL) Study

SEPTEMBER 18, 2023



Supplemental Slides

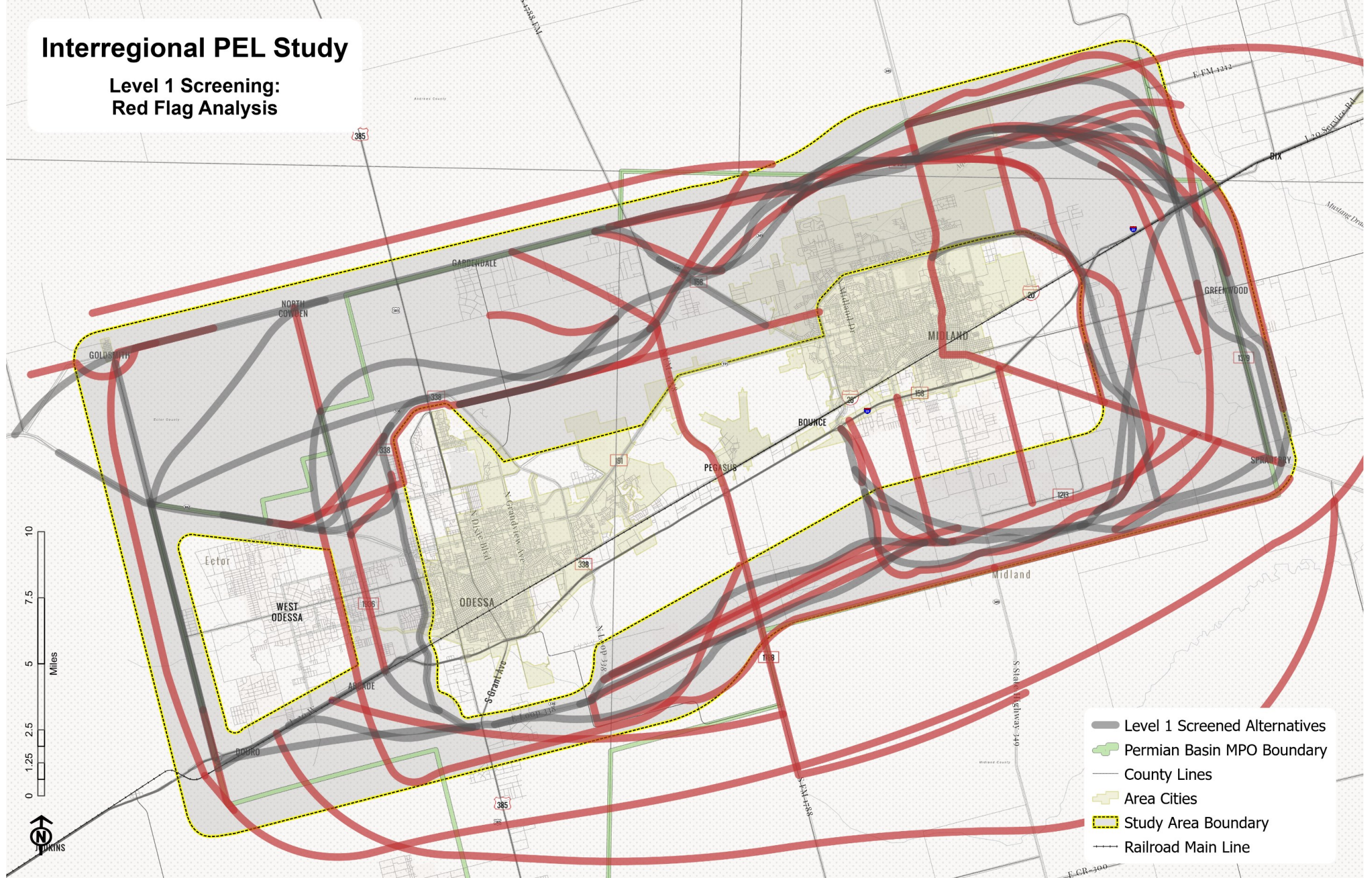




Public Engagement Events

Interregional PEL Study

Level 1 Screening:
Red Flag Analysis



- Level 1 Screened Alternatives
- Permian Basin MPO Boundary
- County Lines
- Area Cities
- Study Area Boundary
- Railroad Main Line

Level 2 Screening Criteria

Consistency with Regional Plans & Infrastructure

Planned and Existing Systems and Projects

Natural Environmental Impacts

Archeological Sites

Threatened/Endangered Species

Parks and Open Space

Agriculture

Oil and Gas Infrastructure

Etc.

Social Environmental Impacts

Vulnerable Populations

Community Facilities

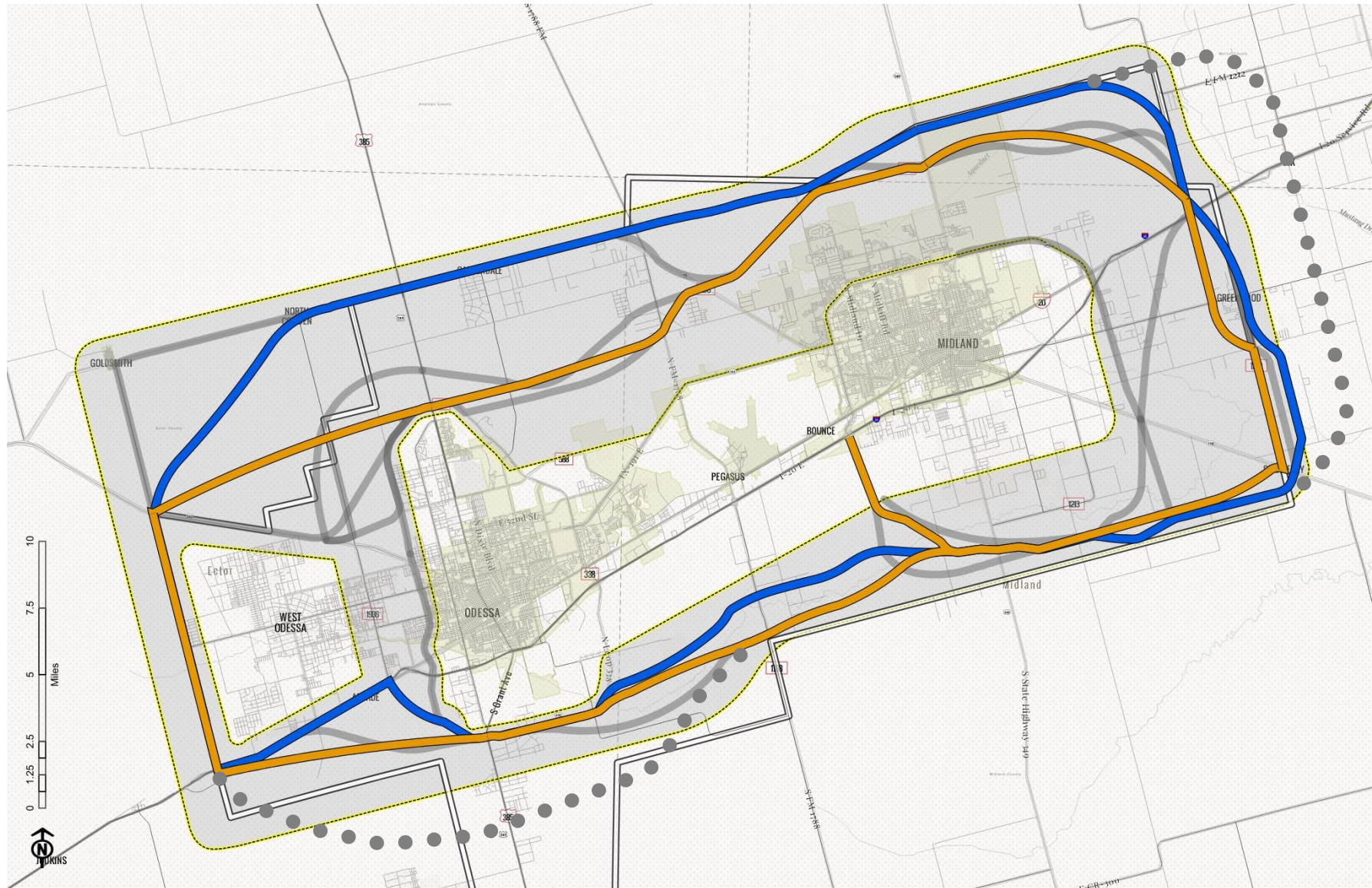
Sensitive Receptors

Economic Development

Conducive to future job growth

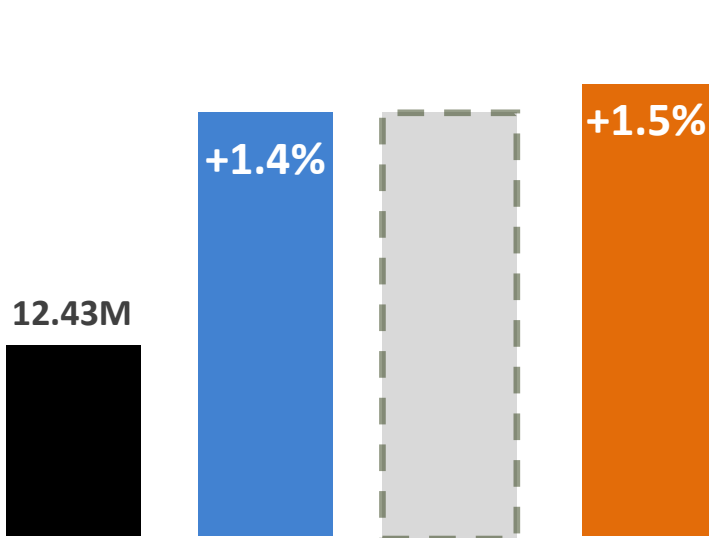
Land Use Compatibility

Modeled Routes

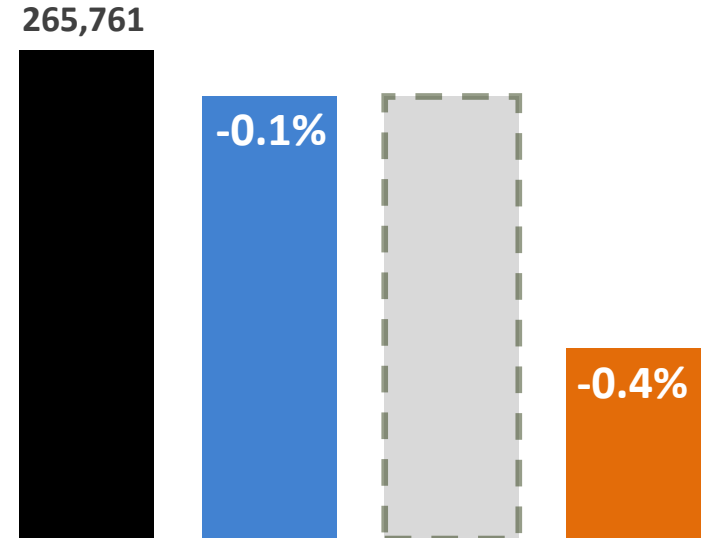


Performance Metrics

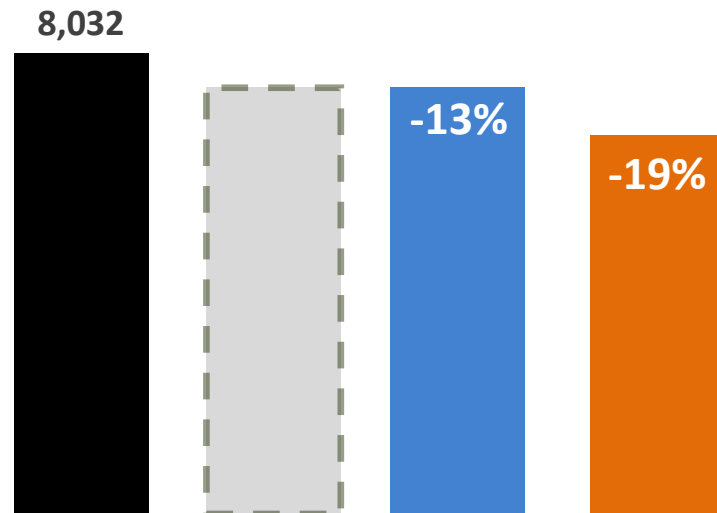
Total Miles Traveled (VMT)



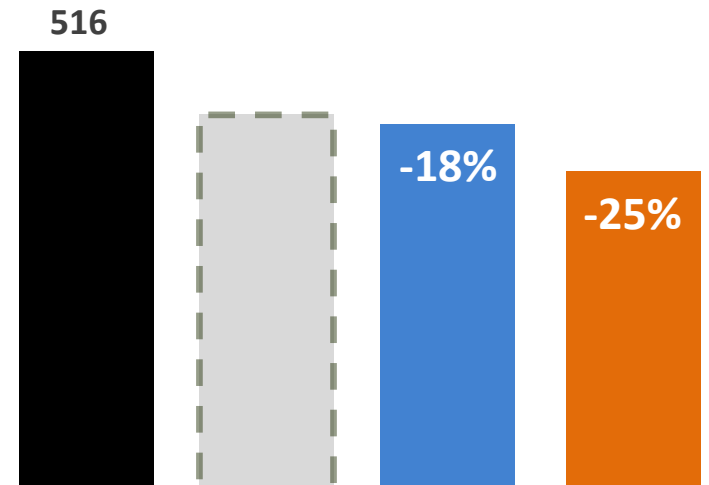
Total Hours Traveled (VHT)

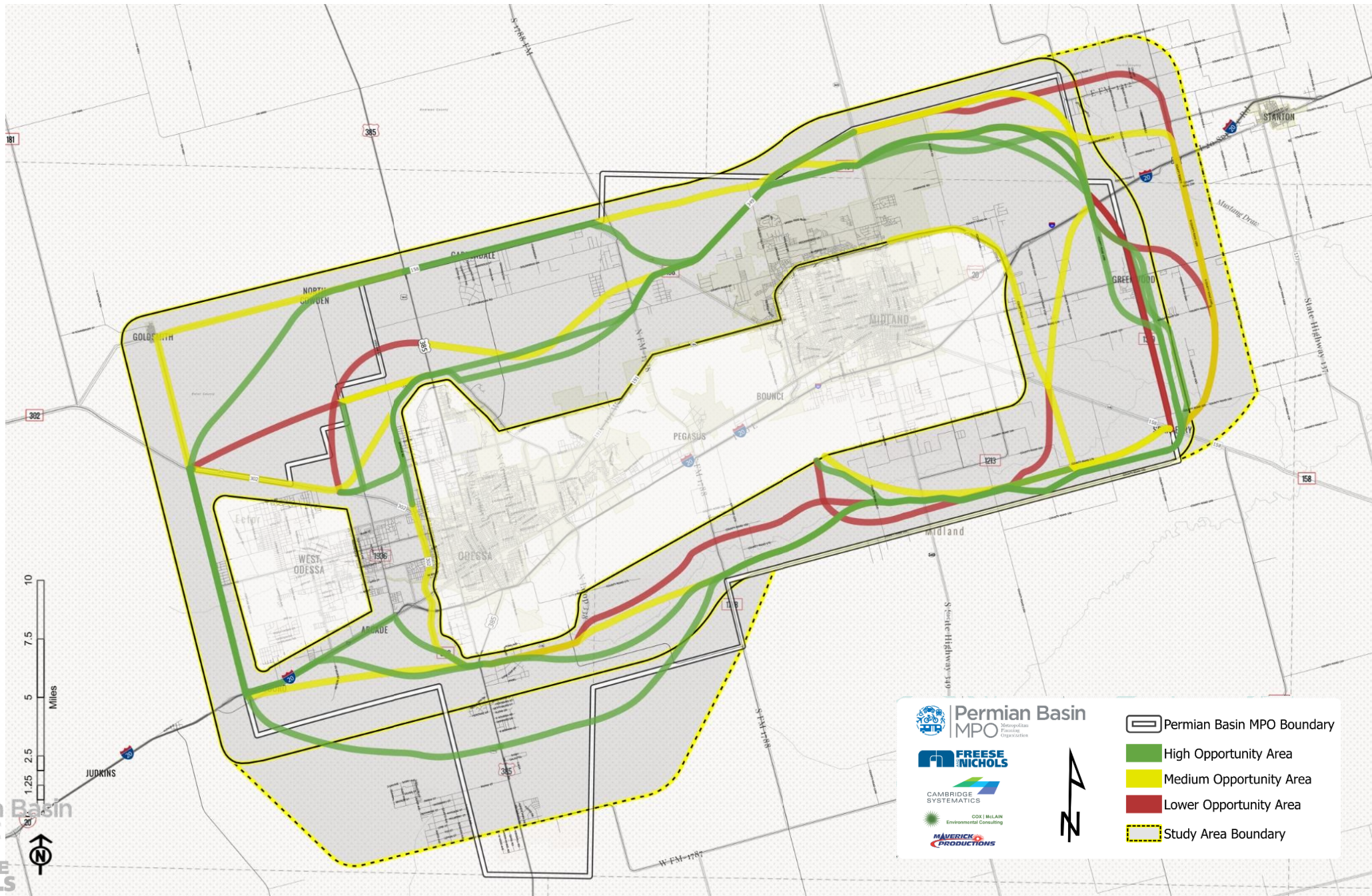


Total Automobile Delay (Hours)



Total Truck Delay (Hours)





Permian Basin MPO
Metropolitan Planning Organization

FREESE NICHOLS
CAMBRIDGE SYSTEMATICS
COX | MILAN Environmental Consulting
MAVERICK PRODUCTIONS

- Permian Basin MPO Boundary
- High Opportunity Area
- Medium Opportunity Area
- Lower Opportunity Area
- Study Area Boundary