



Crash Summary Report (2020-2022)



Introduction

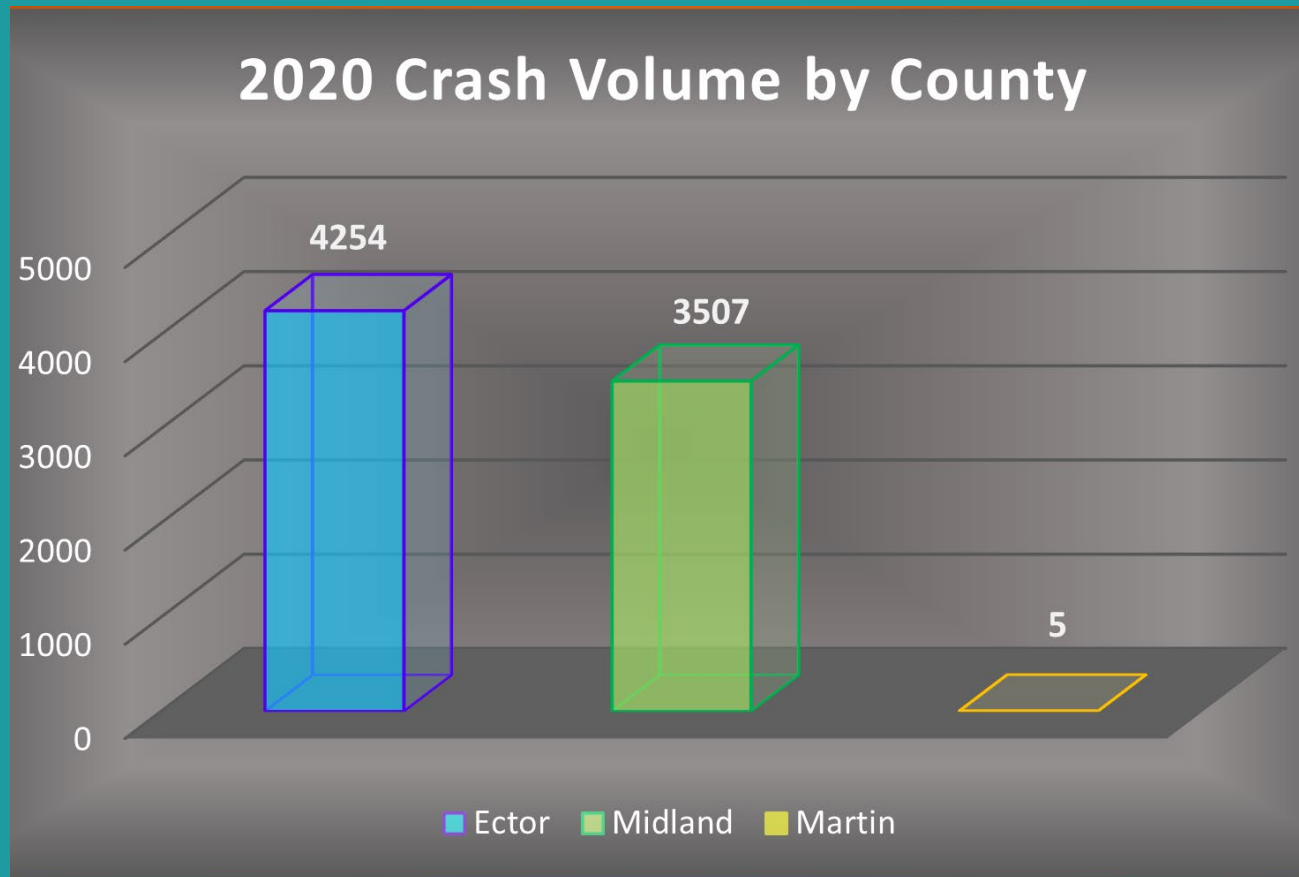
This report looks at 2020-2022 crash data for the Permian Basin MPO area for the purpose of identifying;

- The trend of crashes across the PBMPO and;
- roads with high volumes of crashes.

- ❖ Source: TxDOT Crash Record Information System (CRIS)
- ❖ Disclaimer: Study encompasses all of Midland and Ector County and a portion of Martin County

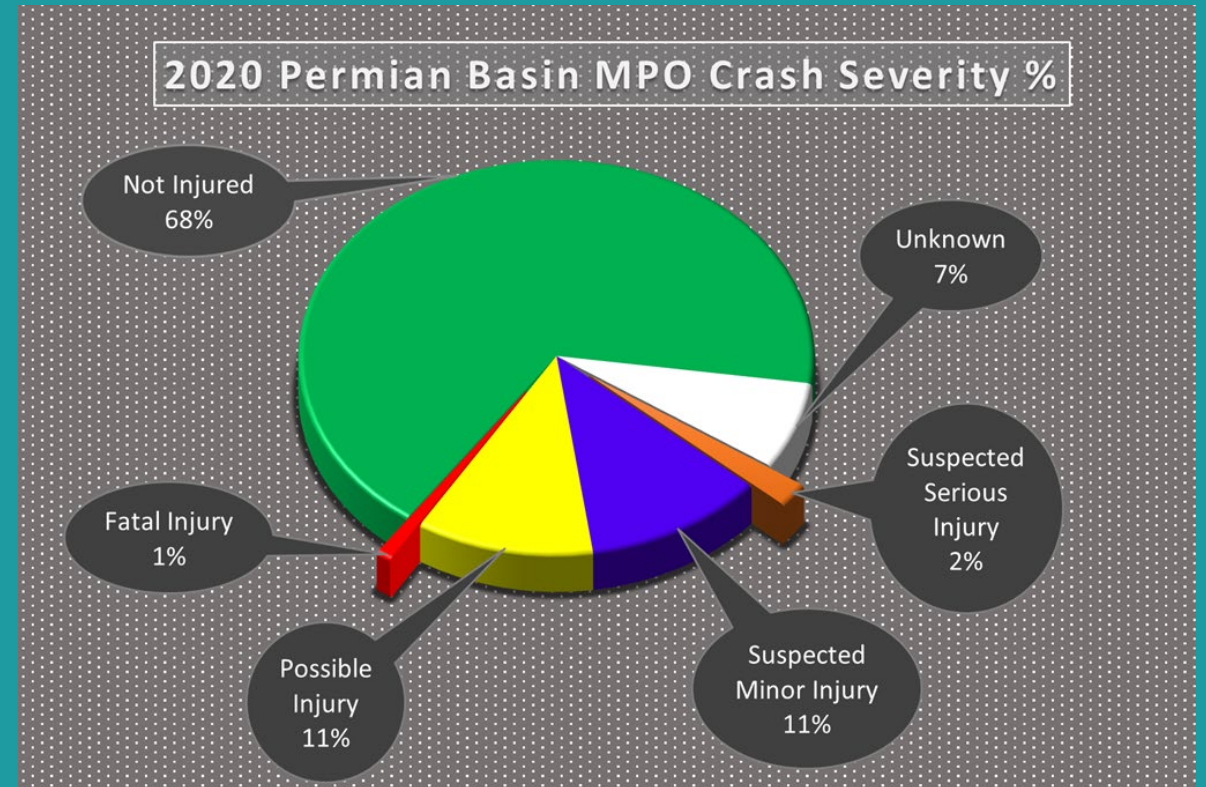
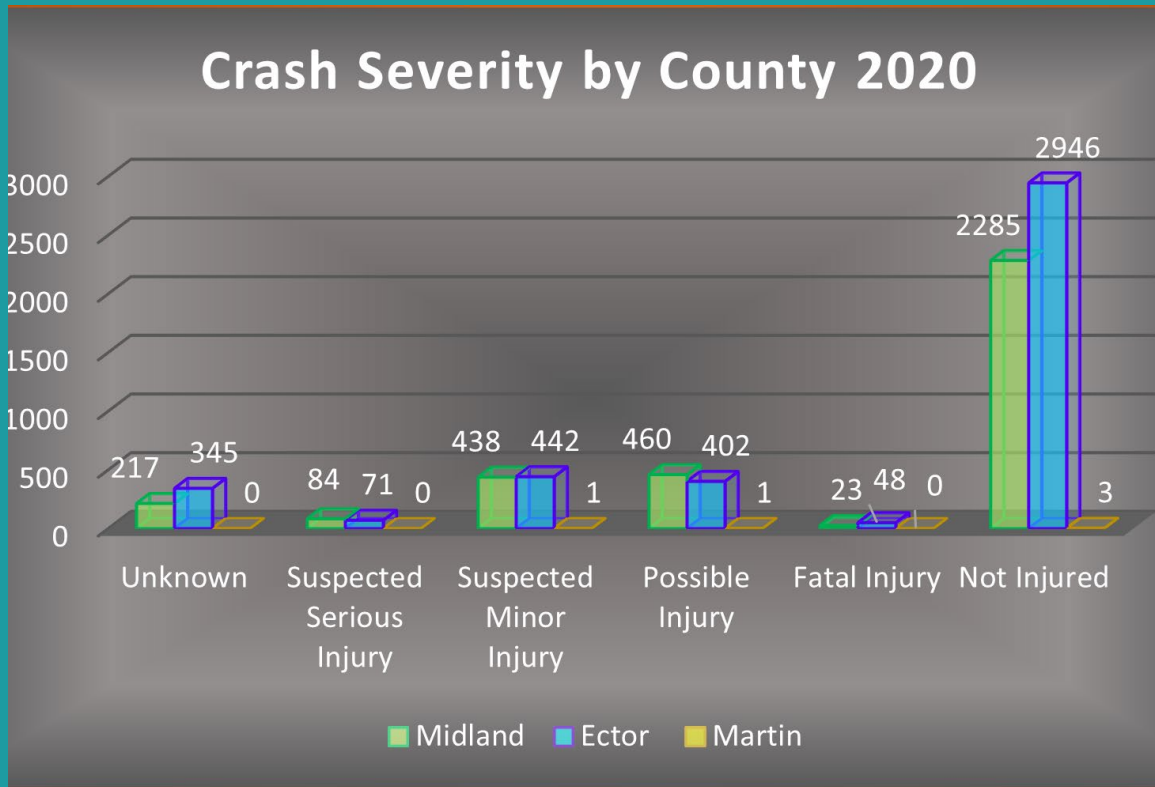
2020 Crash Data Summary

2020 Crash Volume by County



- 2020 Crash Volume by County
 - Ector: 4,254
 - Midland: 3,507
 - Martin: 5

2020 Crash Severity Summary

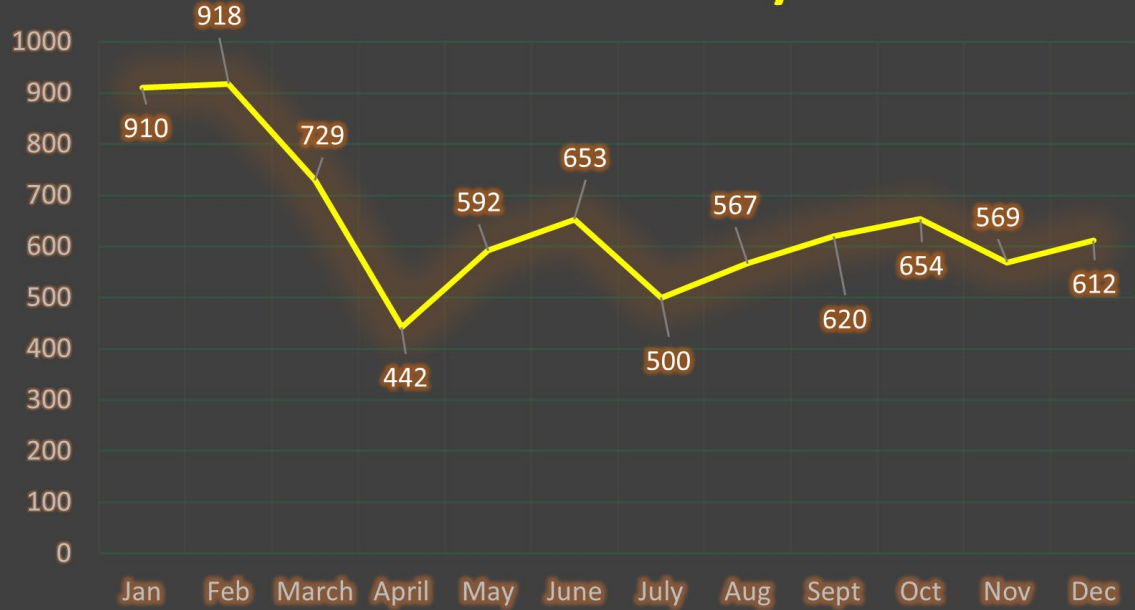


- 2020 Crash Severity

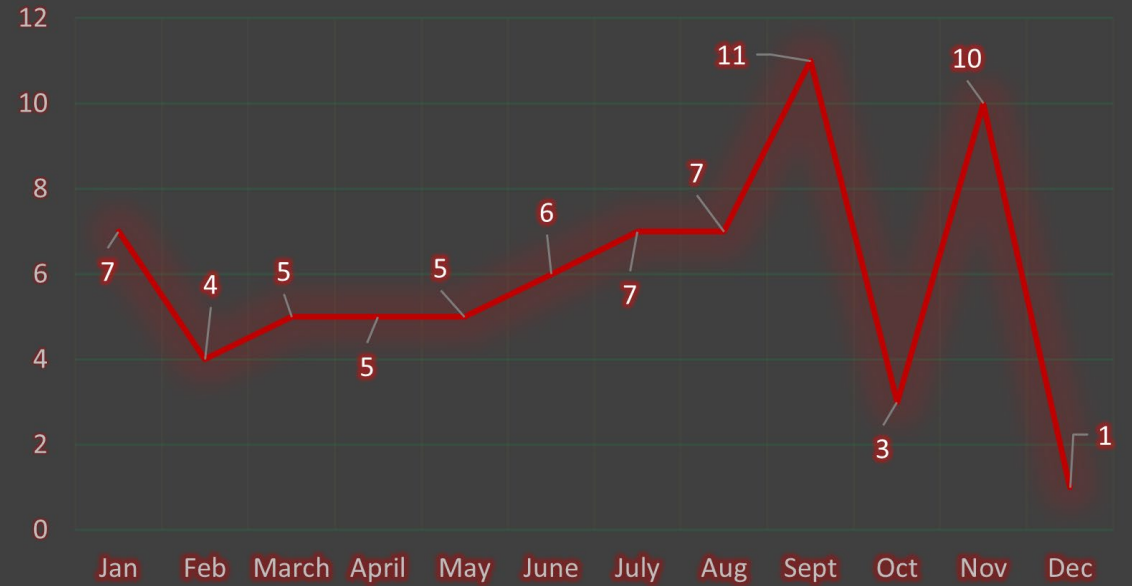
- Unknown: 562
- Not Injured: 5,234
- Possibly Injury: 863
- Suspected Minor Injury: 881
- Suspected Major Injury: 155
- Fatal Injury: 71

Total: 7,766 Crashes in 2020 within the Permian Basin MPO.

Crash Timeline - 2020 by Month



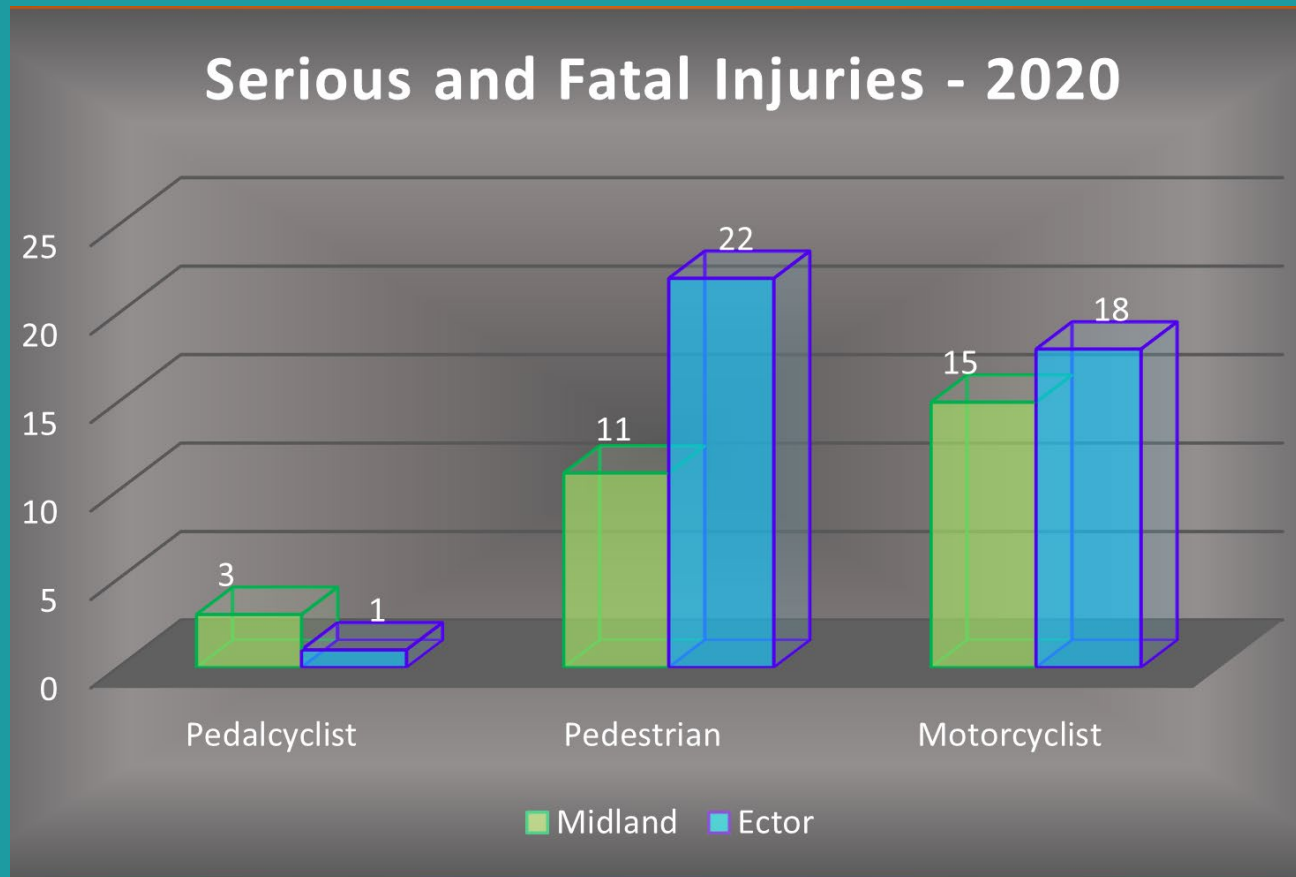
Fatality Count - 2020 by Month



There was a total of 71 fatalities in 2020

Crash Timeline and Fatality Count by Month (2020)

2020 Pedestrian, Pedalcyclist, and Motorcyclist Death and Serious Injury



- 2020 Volume by County

- Ector: 41 People Involved

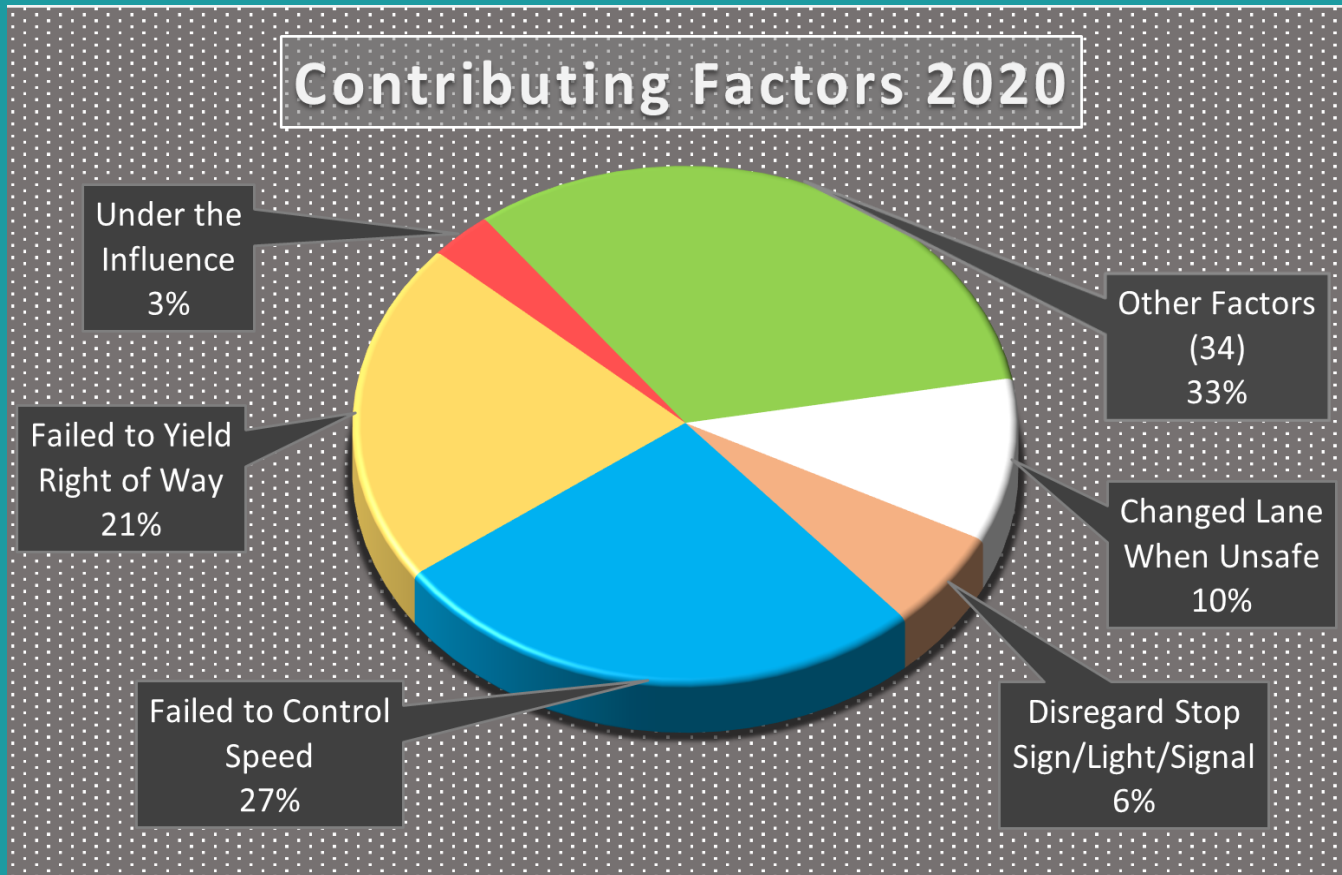
- 0 Pedalcyclist Fatalities
 - 13 Pedestrian Fatalities
 - 8 Motorcyclist Fatalities

- Midland: 29 People Involved

- 0 Pedalcyclist Fatalities
 - 3 Pedestrian Fatalities
 - 3 Motorcyclist Fatalities

- CRIS records indicate that Martin County did not have any deaths or serious injuries that match the criteria

2020 Crash Contributing Factors



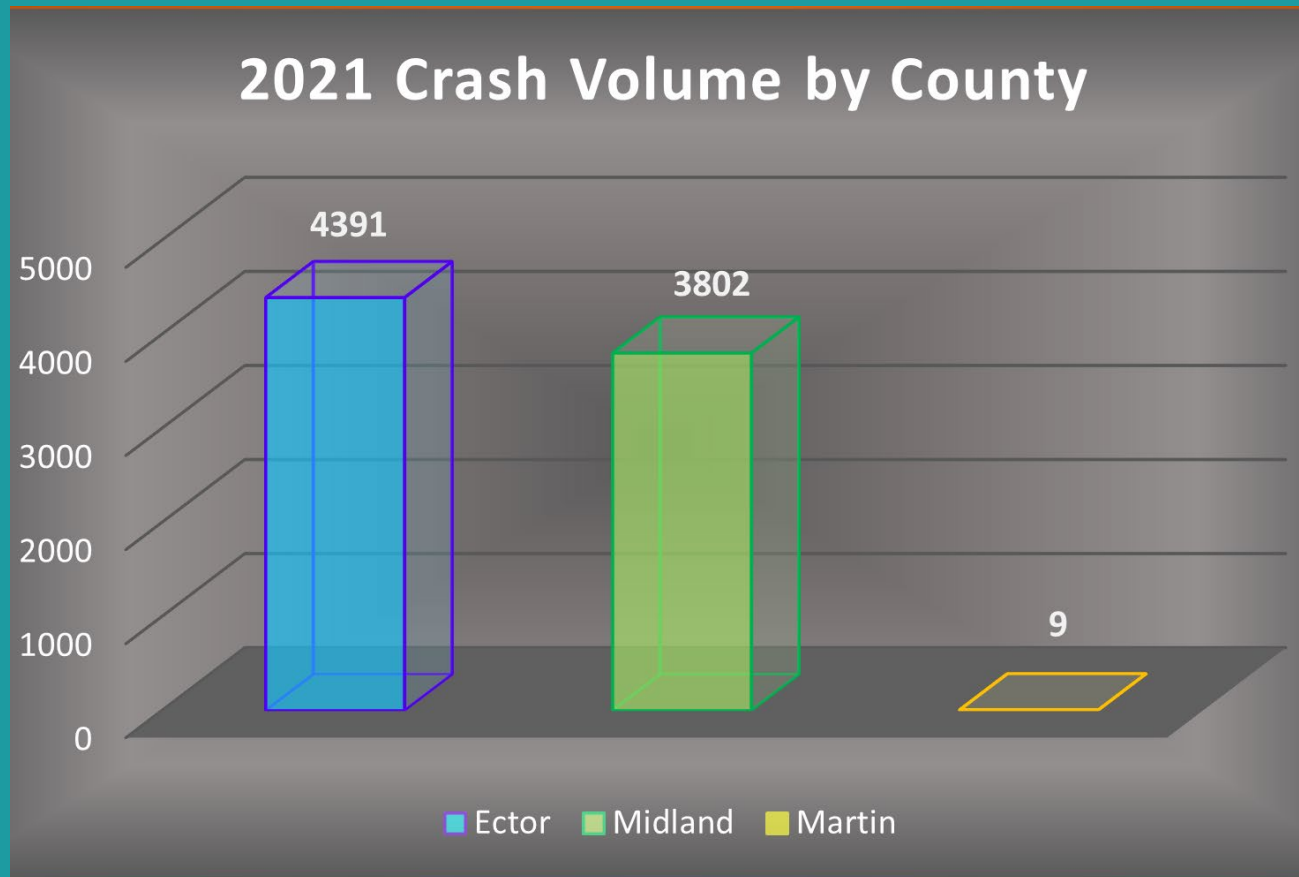
- 2020 Factor

- Changed Lane When Unsafe: 810
- Disregard Stop Sign/Light/Signal: 477
- Failed to Control Speed: 2,034
- Failed to Yield Right of Way: 1,598
- Under the Influence: 303
- Other Factors (34): 2,544

- Total: 7,766 Crashes in 2020 within the Permian Basin MPO.

2021 Crash Data Summary

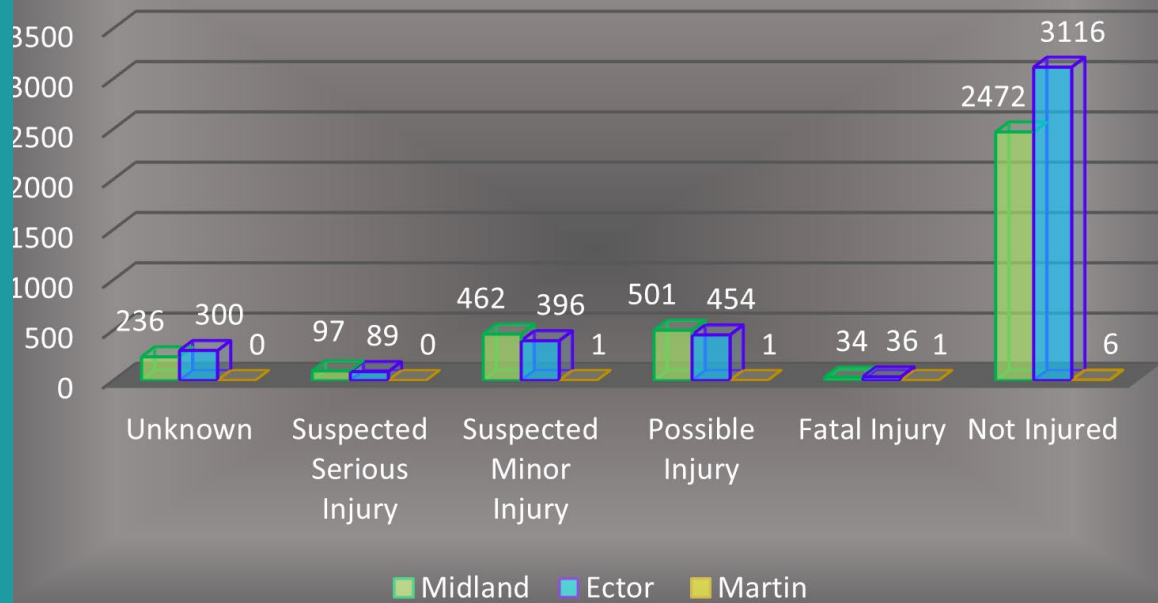
2021 Crash Volume by County



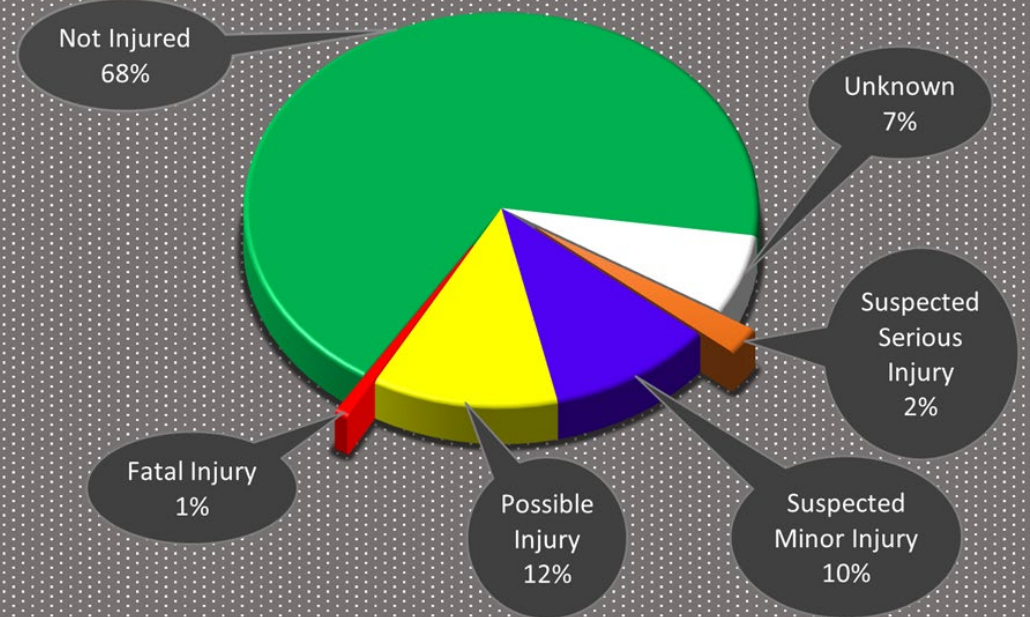
- 2021 Crash Volume by County
 - Ector: 4,391
 - Midland: 3,802
 - Martin: 9

2021 Crash Severity Summary

Crash Severity by County 2021



2021 Permian Basin MPO Crash Severity %

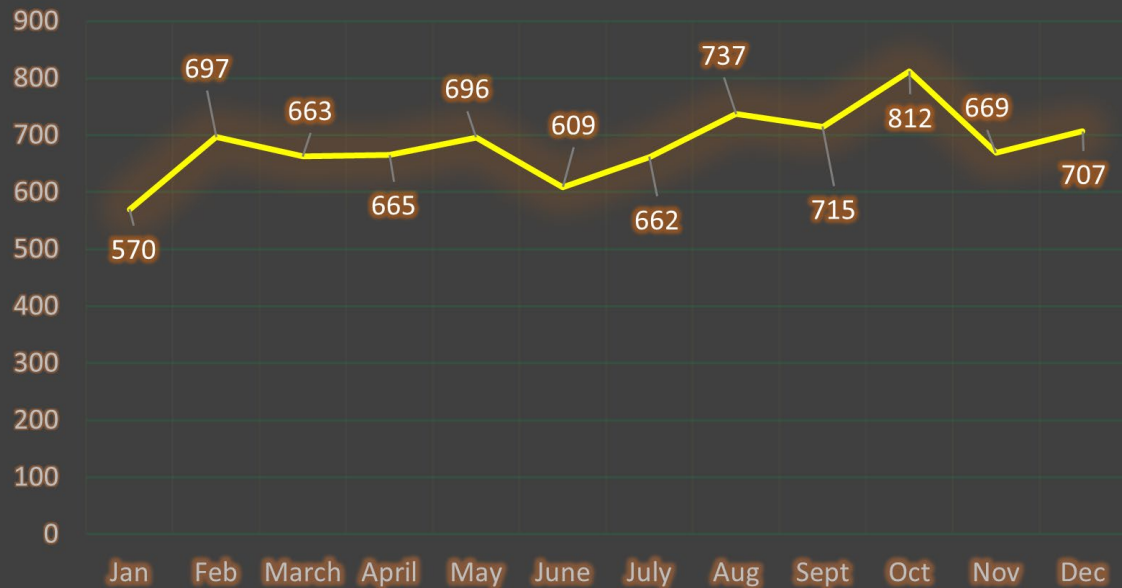


- **2021 Crash Volume**

- Unknown: 536
- Not Injured: 5,594
- Possible Injury: 956
- Suspected Minor Injury: 859
- Suspected Major Injury: 186
- Fatal Injury: 71

Total: 8,202 Crashes in 2021 within the Permian Basin MPO.

Crash Timeline - 2021 by Month



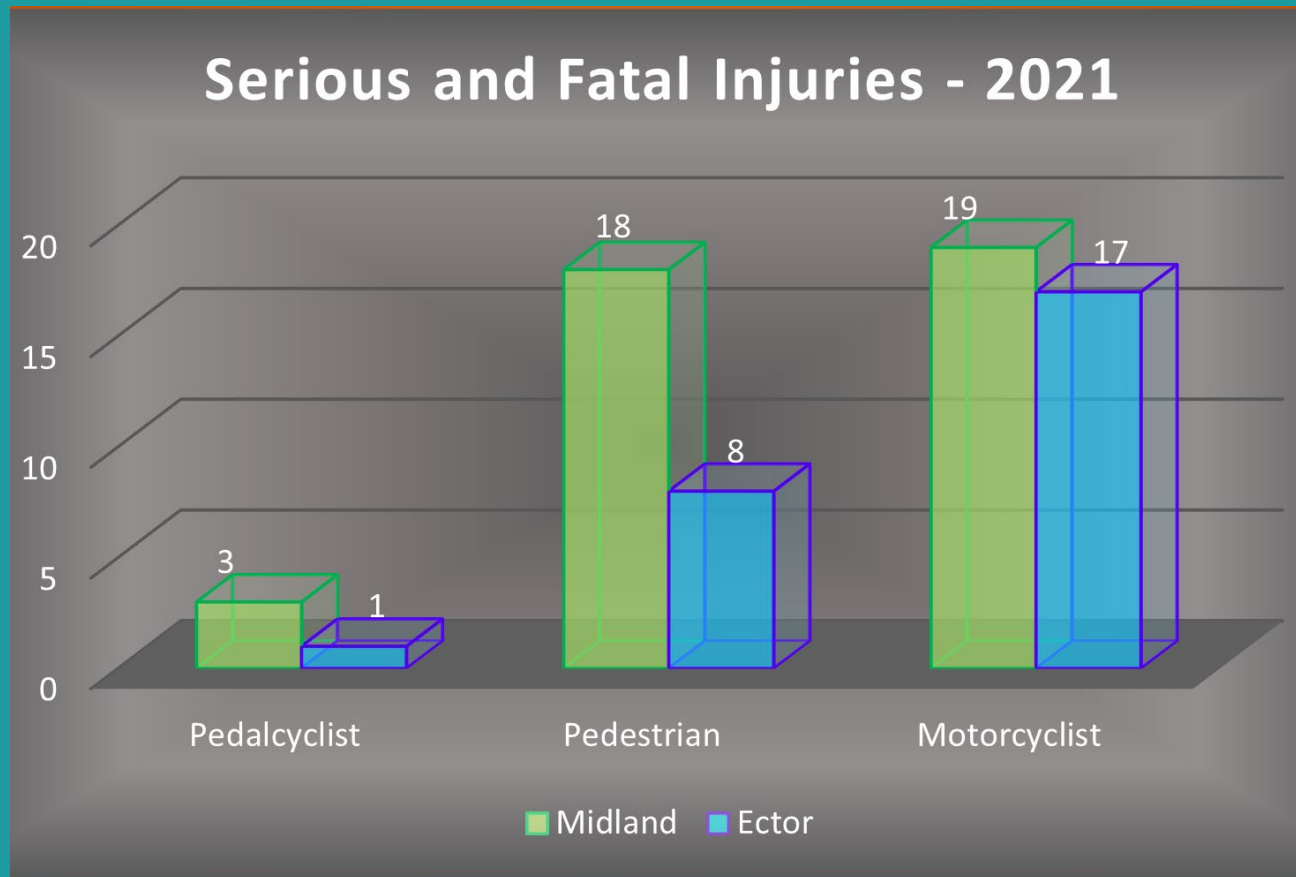
Fatality Count - 2021 by Month



There was a total of 71 fatalities in 2021

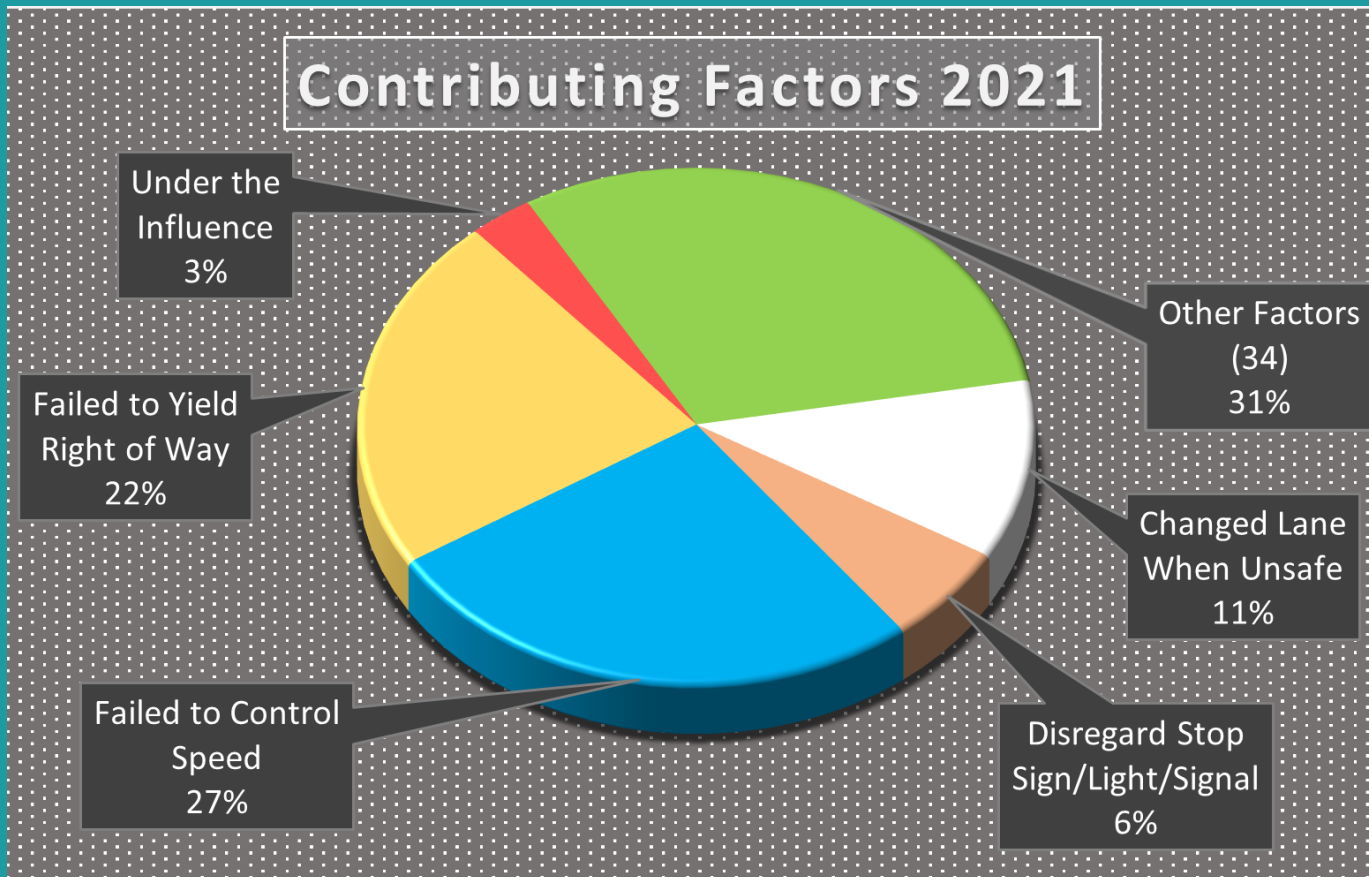
Crash Timeline and Fatality Count by Month (2021)

2021 Pedestrian, Pedalcyclist, and Motorcyclist Death and Serious Injury



- 2021 Volume by County
 - Ector: 26 People Involved
 - 0 Pedalcyclist Fatalities
 - 3 Pedestrian Fatalities
 - 3 Motorcyclist Fatalities
 - Midland: 40 People Involved
 - 0 Pedalcyclist Fatalities
 - 11 Pedestrian Fatalities
 - 2 Motorcyclist Fatalities
- CRIS records indicate that Martin County did not have any deaths or serious injuries that match the criteria

2021 Crash Contributing Factors



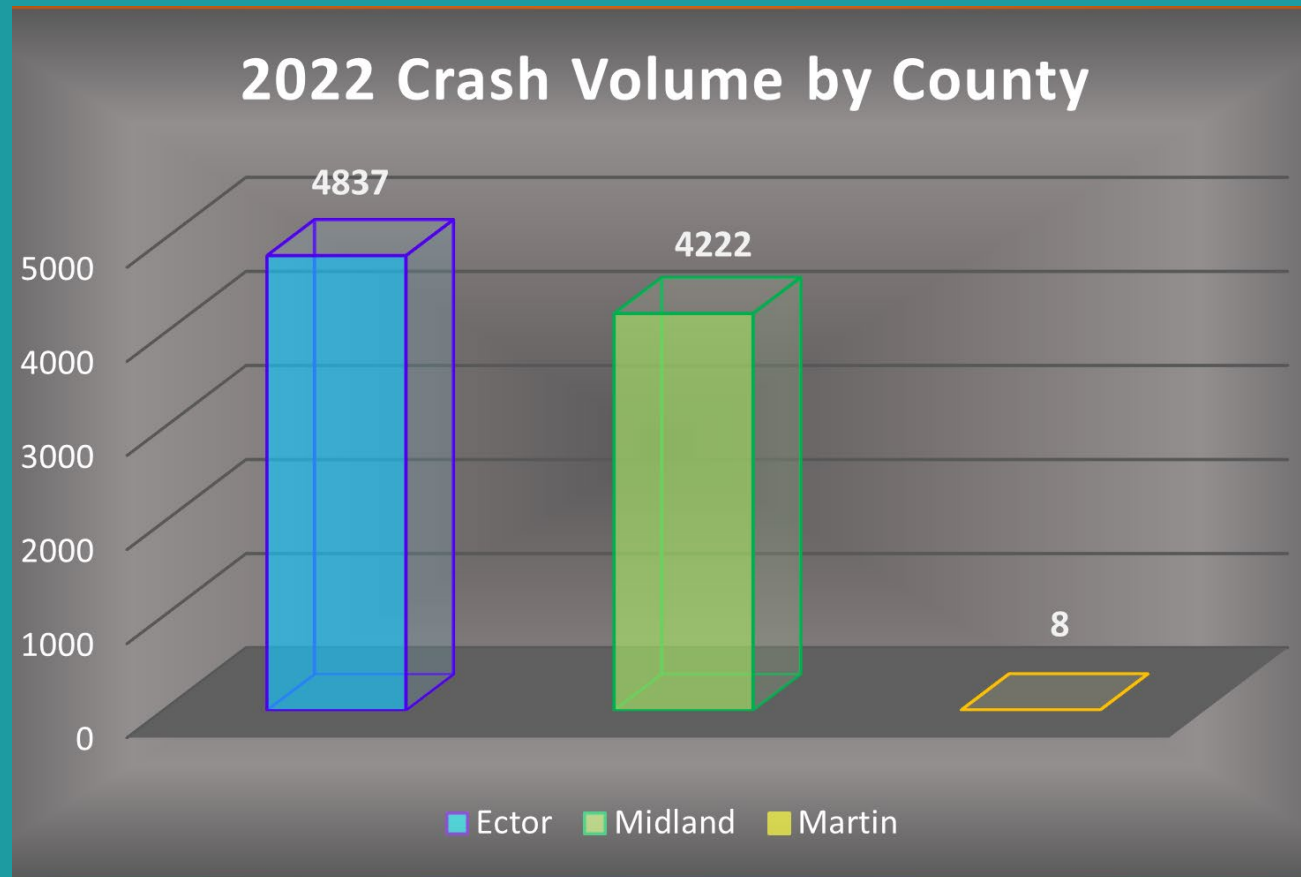
- 2021 Factor

- Changed Lane When Unsafe: 896
- Disregard Stop Sign/Light/Signal: 507
- Failed to Control Speed: 2,196
- Failed to Yield Right of Way: 1,773
- Under the Influence: 319
- Other Factors (34): 2,511

- Total: 8,202 Crashes in 2021 within the Permian Basin MPO.

2022 Crash Data Summary

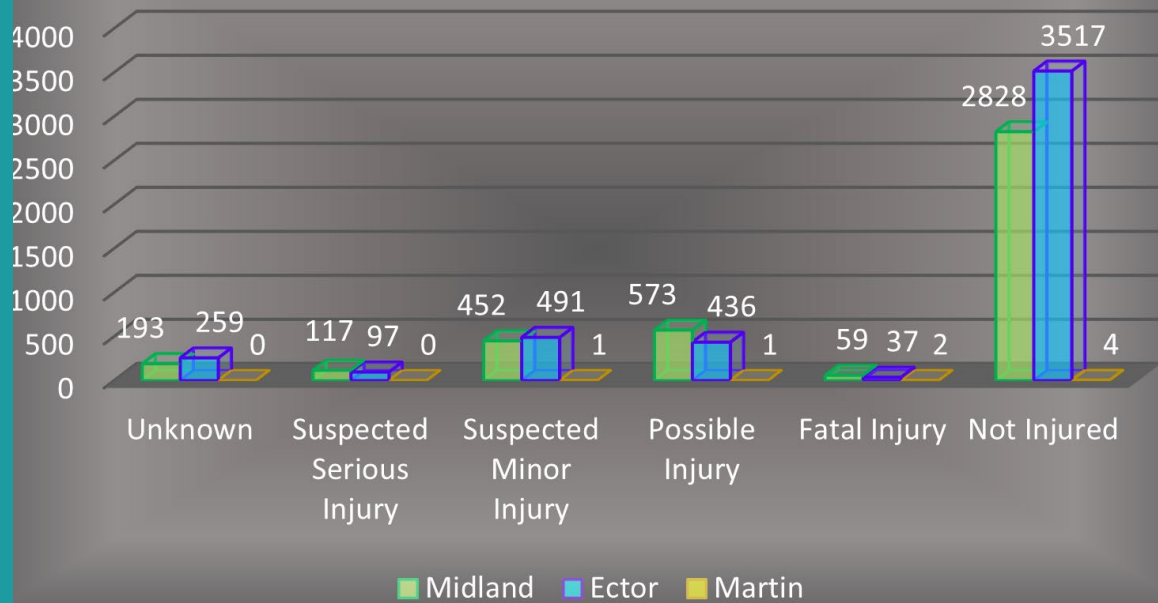
2022 Crash Volume by County



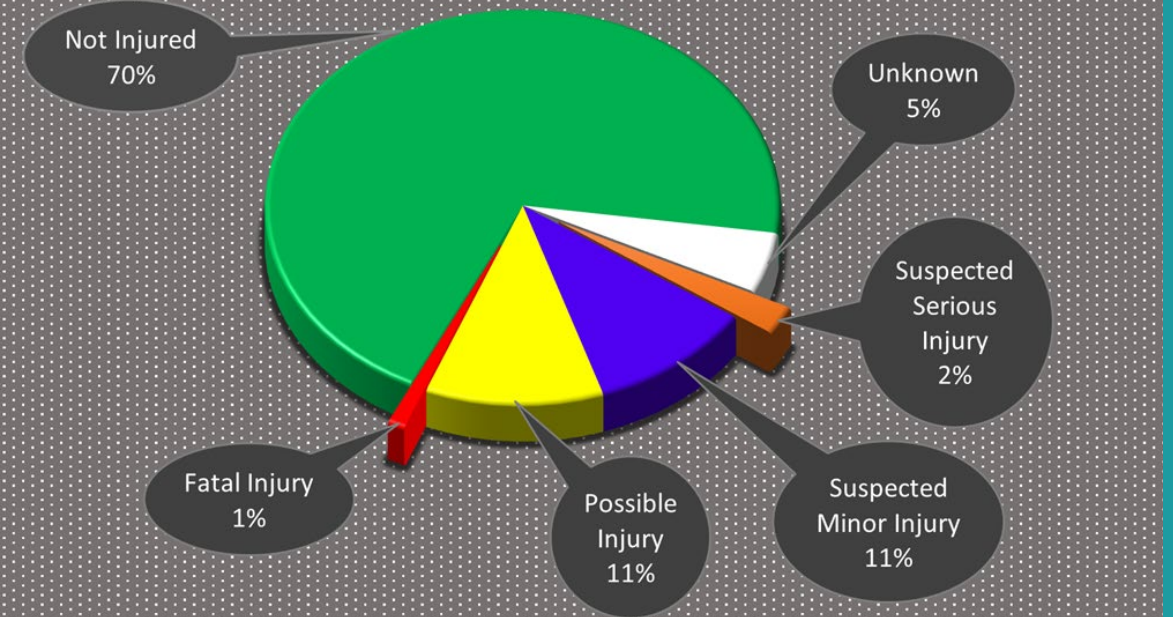
- 2022 Crash Volume by County
 - Ector: 4,837
 - Midland: 4,222
 - Martin: 8

2022 Crash Severity Summary

Crash Severity by County 2022



2022 Permian Basin MPO Crash Severity %

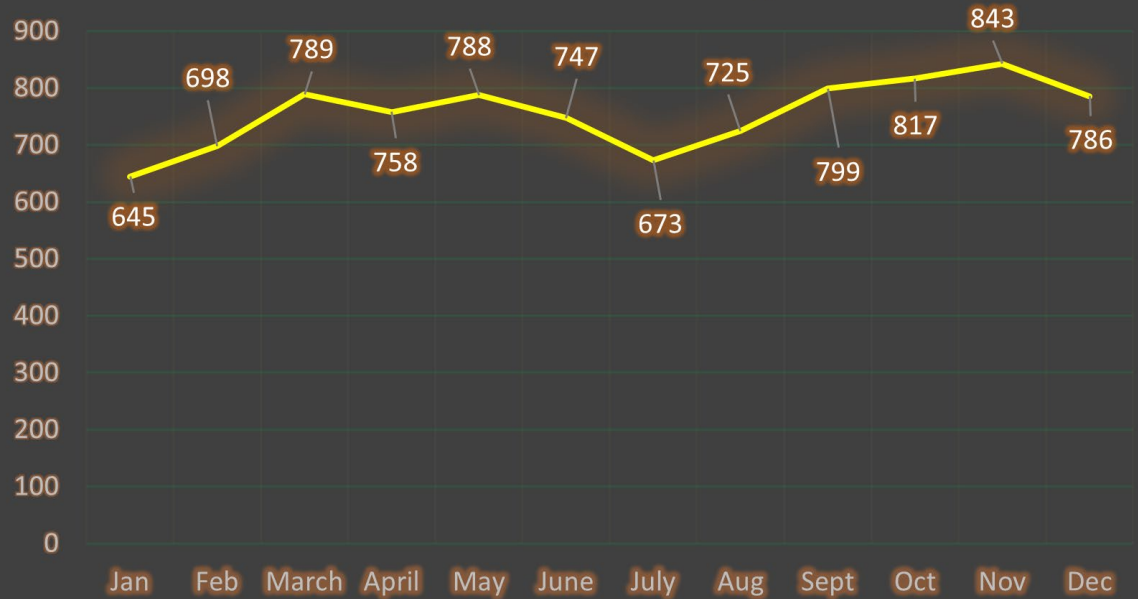


- 2022 Crash Volume

- Unknown: 452
- Not Injured: 6,349
- Suspected Minor Injury: 944
- Suspected Major Injury: 214
- Possibly Injury: 1,010
- Fatal Injury: 98

**Total: 9,067 Crashes in 2022
within the Permian Basin MPO**

Crash Timeline - 2022 by Month



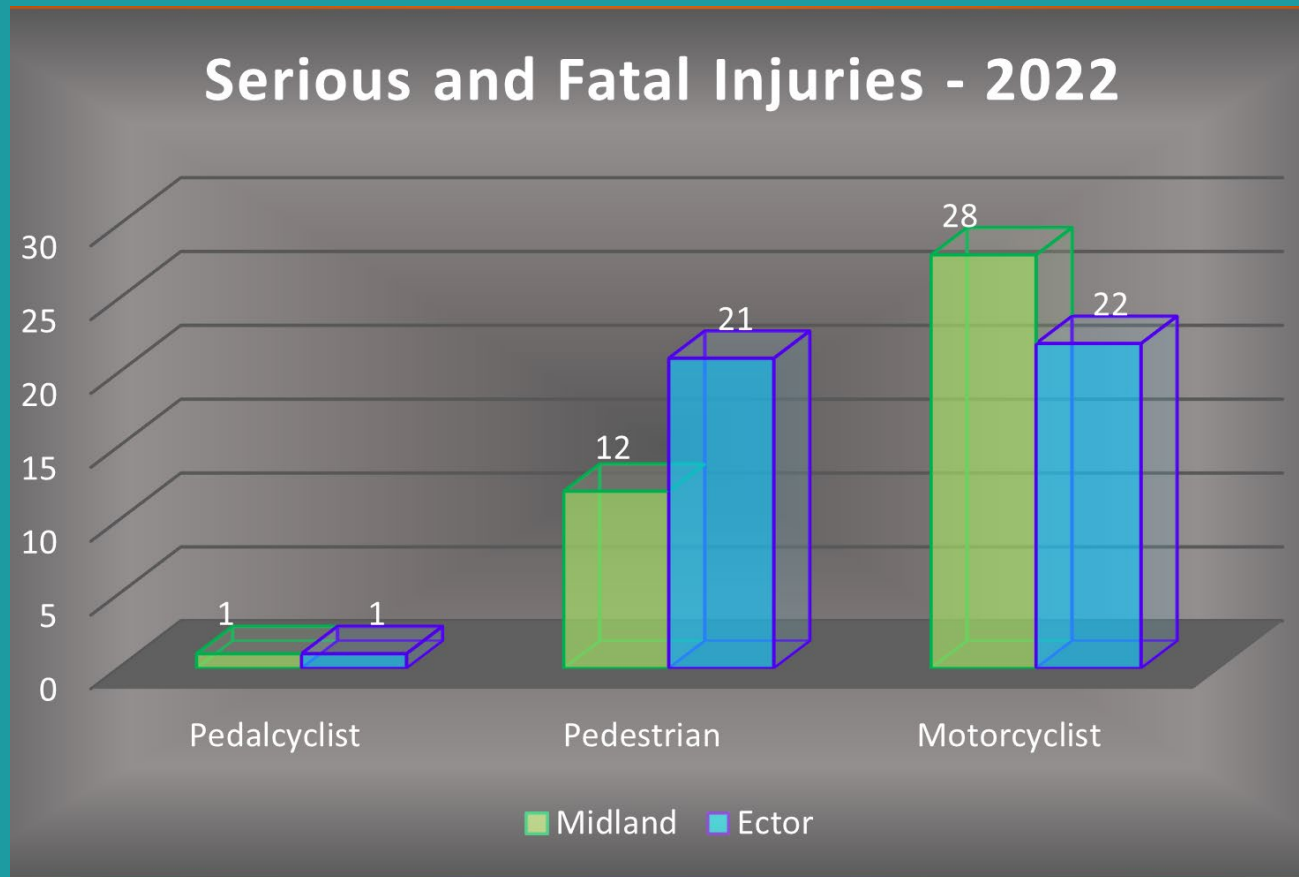
Fatality Count - 2022 by Month



There was a total of 98 fatalities in 2022

Crash Timeline and Fatality Count by Month (2022)

2022 Pedestrian, Pedalcyclist, and Motorcyclist Death and Serious Injury



- 2022 Volume by County

- Ector: 44 people involved

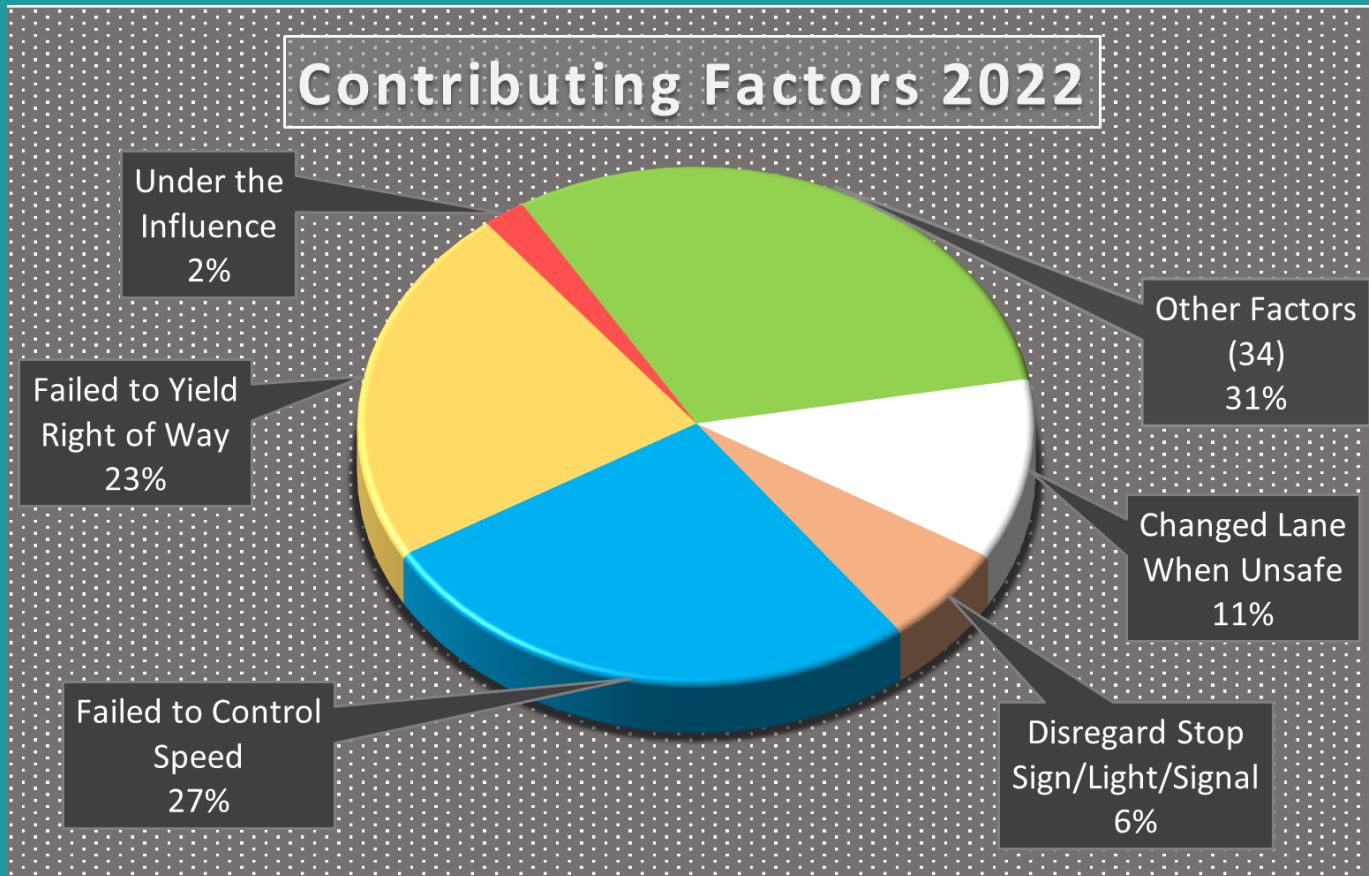
- 0 Pedalcyclist Fatalities
 - 8 Pedestrian Fatalities
 - 5 Motorcyclist Fatalities

- Midland: 41 people involved

- 0 Pedalcyclist Fatalities
 - 4 Pedestrian Fatalities
 - 12 Motorcyclist Fatalities

- CRIS records indicate that Martin County did not have any deaths or serious injuries that match the criteria

2022 Crash Contributing Factors



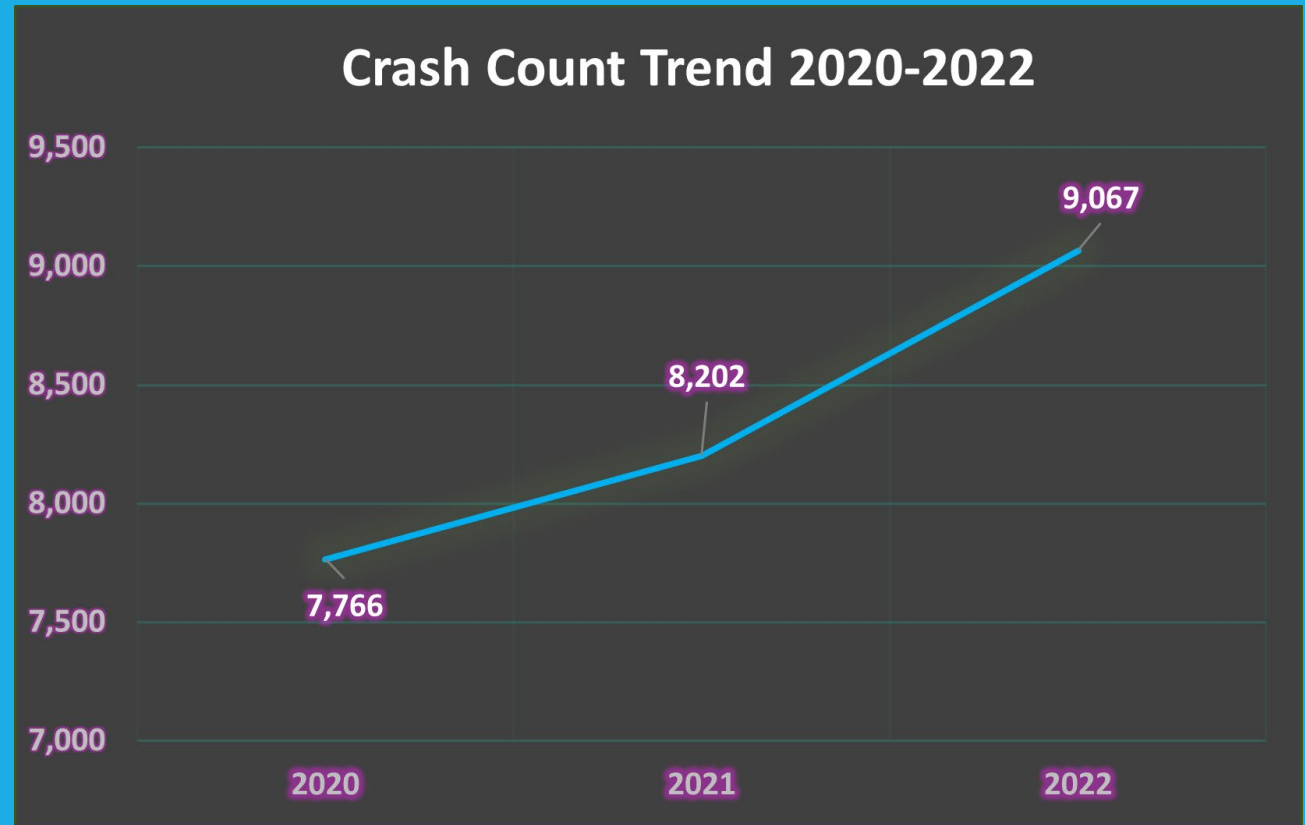
- 2022 Factor

- Changed Lane When Unsafe: 1,041
- Disregard Stop Sign/Light/Signal: 579
- Failed to Control Speed: 2,384
- Failed to Yield Right of Way: 2,011
- Under the Influence: 253
- Other Factors (34): 2,799

- Total: 9,067 Crashes in 2022 within the Permian Basin MPO.

Comparison of 2020-2022 Crash Data

Permian Basin
MPO Area
Crash Count from
2020-2022



2020-2022 Trends

Fatalities

2020: 71 (0.38% of people involved in crashes)

2021: 71 (0.35% of people involved in crashes)

2022: 98 (0.43% of people involved in crashes)

Serious Injury

2020: 317 (1.69% of people involved in crashes)

2021: 350 (1.72% of people involved in crashes)

2022: 438 (1.92% of people involved in crashes)

Bike/Ped Fatalities

2020: 16 (0.09% of people involved in crashes)

2021: 14 (0.07% of people involved in crashes)

2022: 12 (0.05% of people involved in crashes)

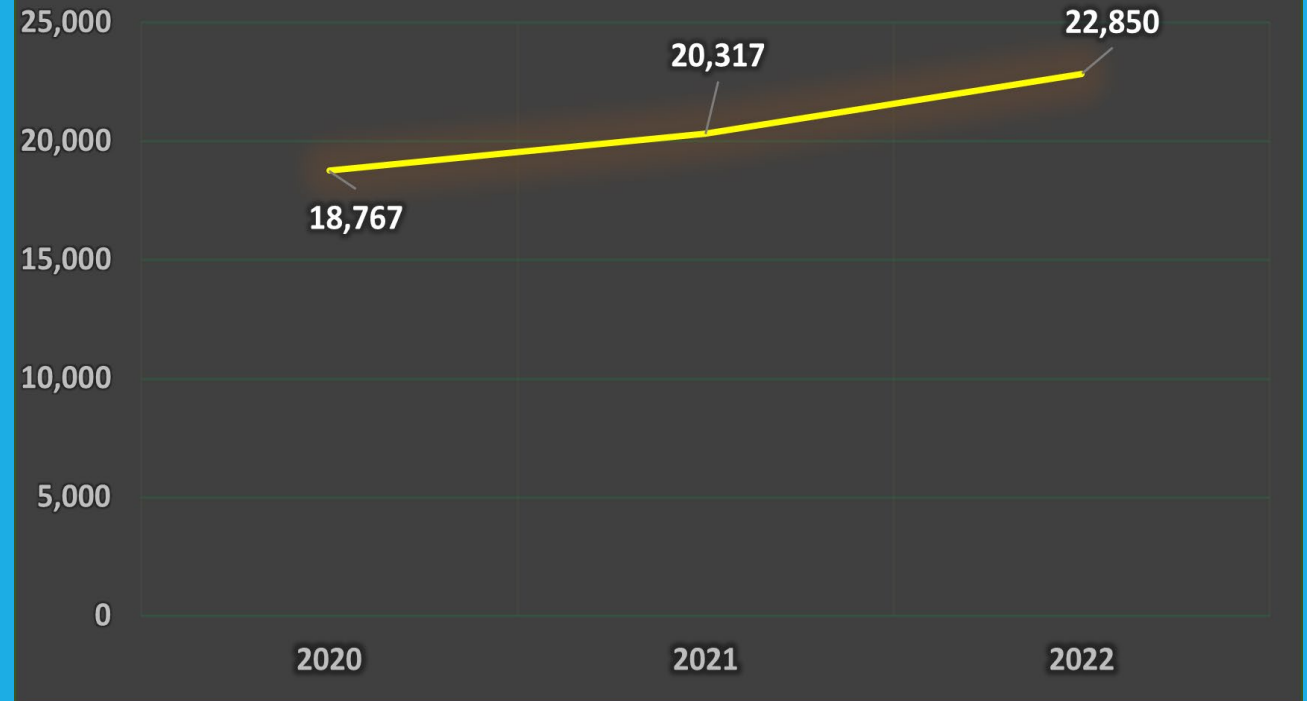
Bike/Ped Serious Injury

2020: 21 (0.11% of people involved in crashes)

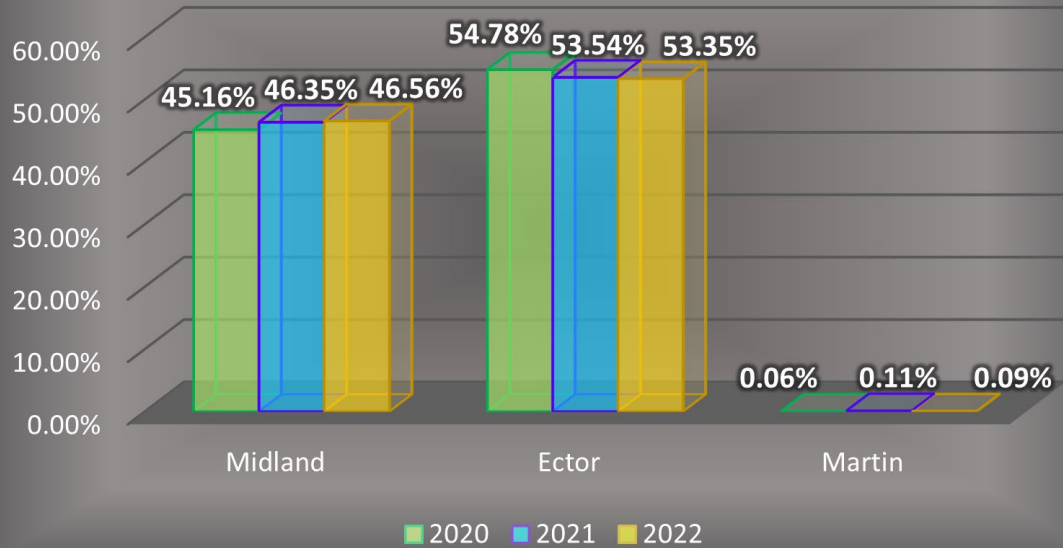
2021: 16 (0.08% of people involved in crashes)

2022: 23 (0.10% of people involved in crashes)

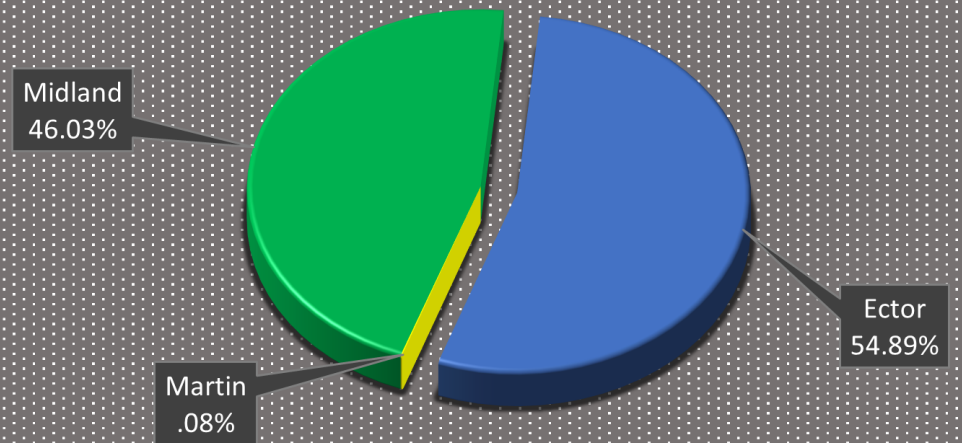
People Involved in Crashes 2020-2022



Crash by County (2020-2022)

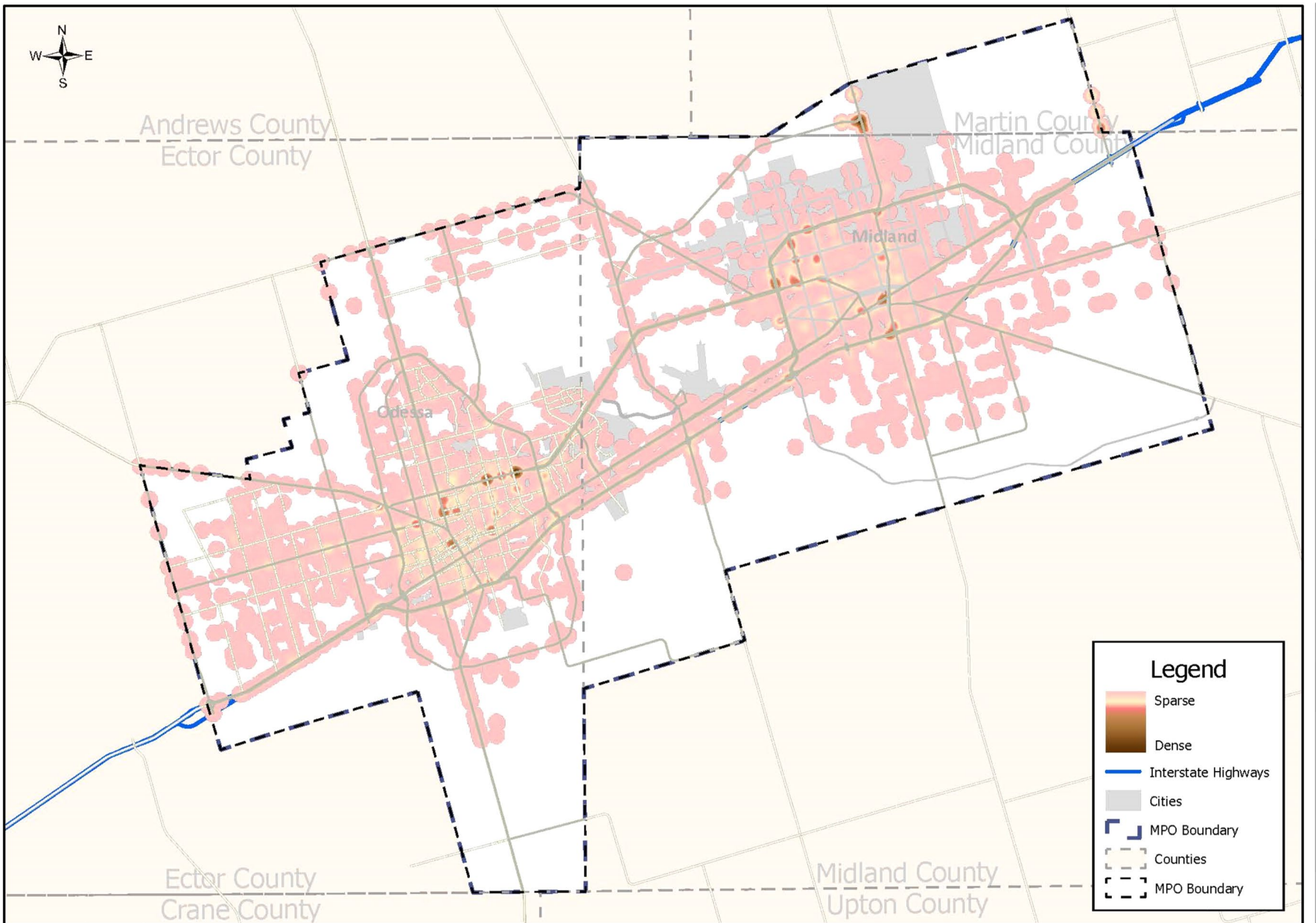


Crash By County for full 3-Year Period



Crash Volume by County (2020-2022)

2020-2022 Crash Density Heat Map



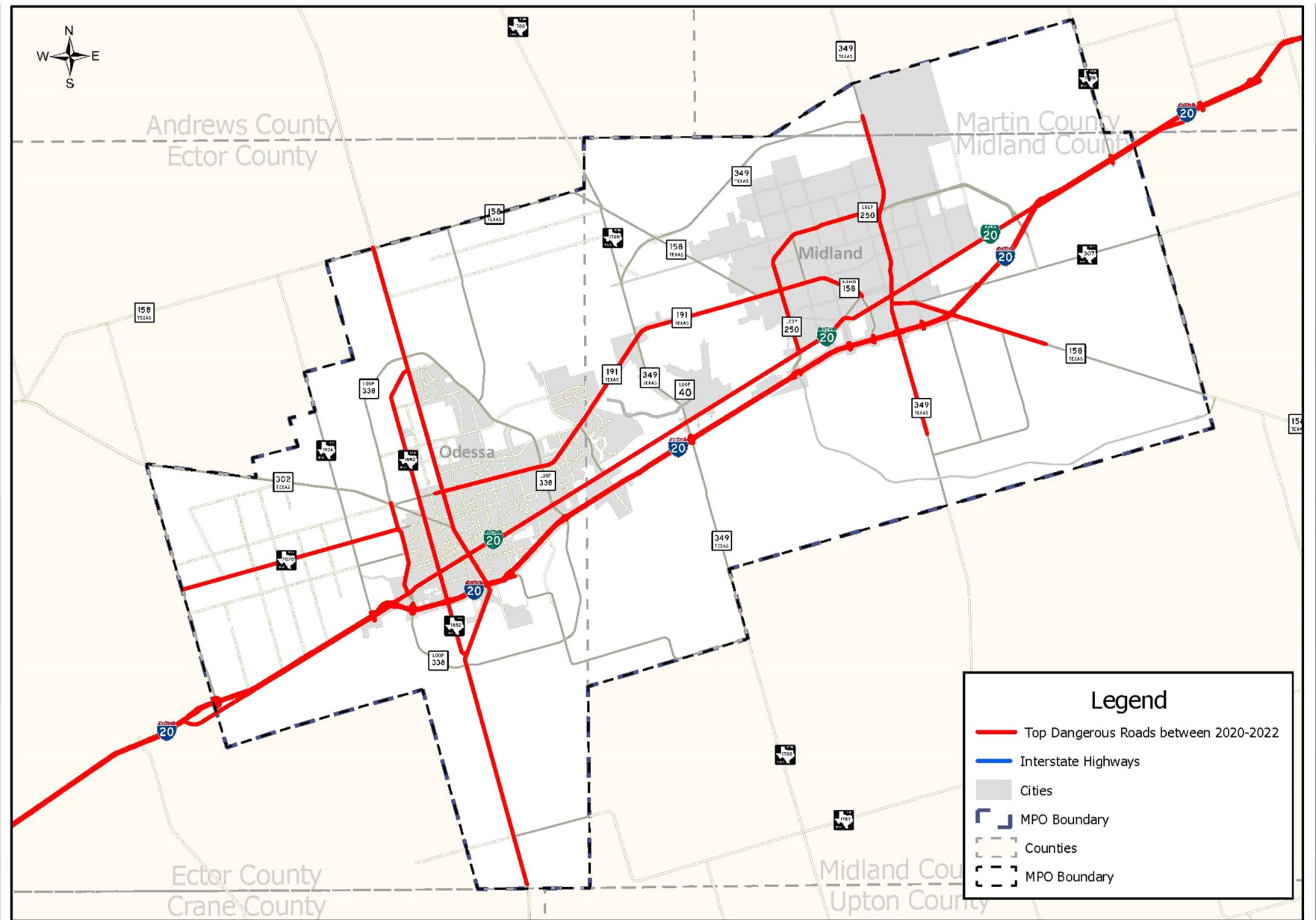
0 2 4 8 Miles

2020-2022 Crash Density Heat Map



This map was developed by Permian Basin MPO for the purpose of aiding in regional transportation planning decisions and is not warranted for any other use. No warranty is made by Permian Basin MPO regarding its accuracy or completeness.

2020-2022 Leading Dangerous Roads Map



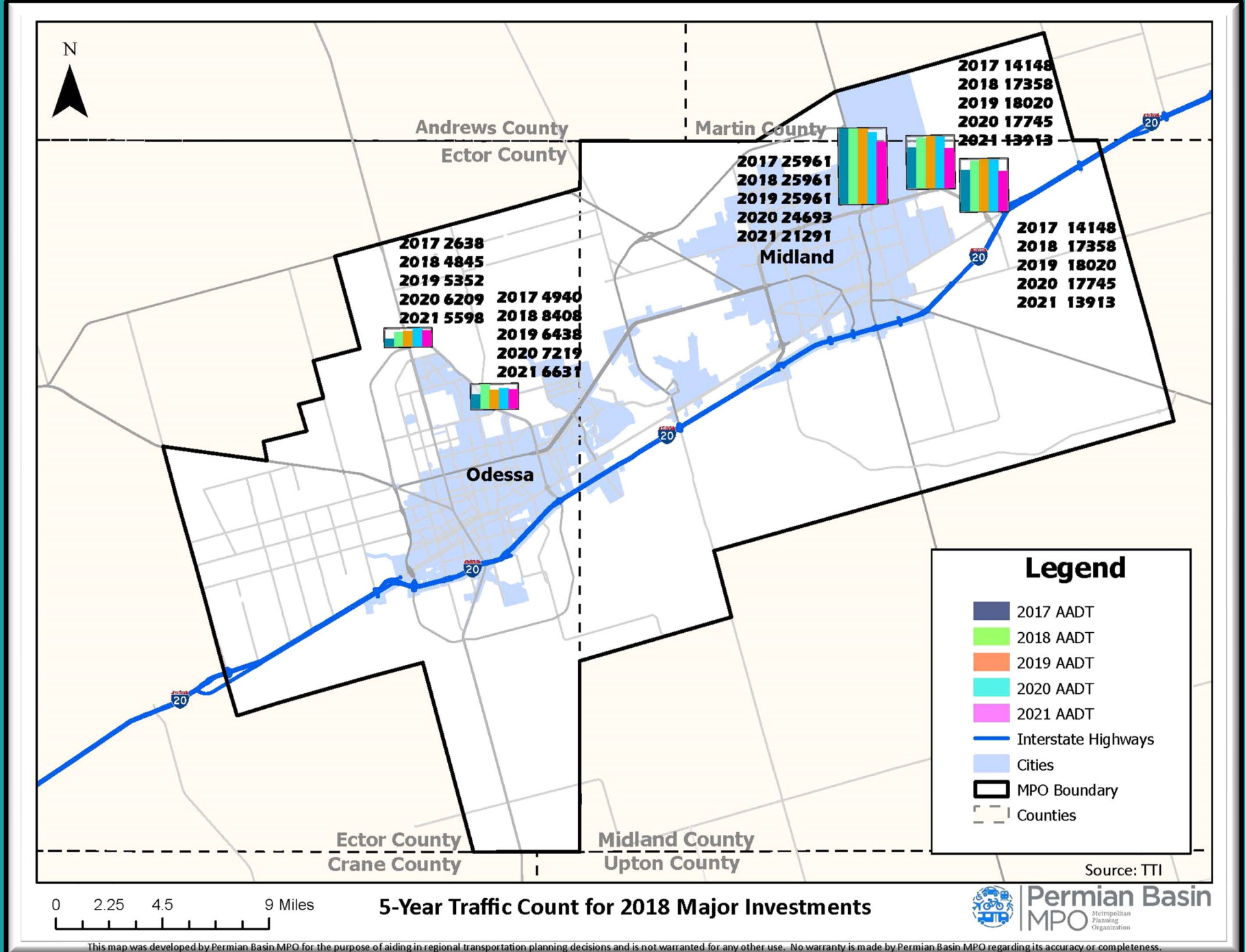
0 2 4 8 Miles

2020-2022 Leading Dangerous Roads



This map was developed by Permian Basin MPO for the purpose of aiding in regional transportation planning decisions and is not warranted for any other use. No warranty is made by Permian Basin MPO regarding its accuracy or completeness.

2018 Major Investments Traffic Count



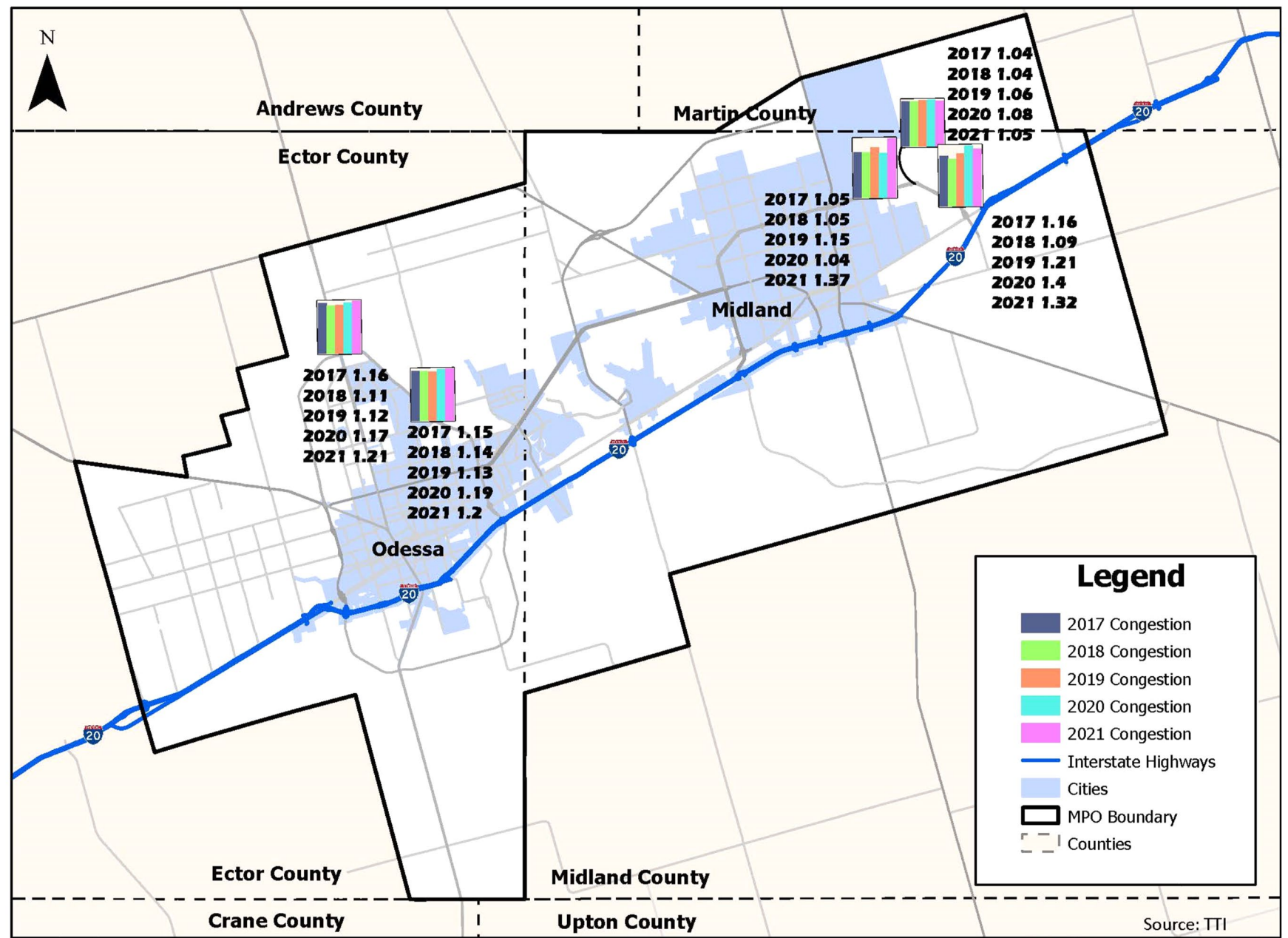
0 2.25 4.5 9 Miles

5-Year Traffic Count for 2018 Major Investments



This map was developed by Permian Basin MPO for the purpose of aiding in regional transportation planning decisions and is not warranted for any other use. No warranty is made by Permian Basin MPO regarding its accuracy or completeness.

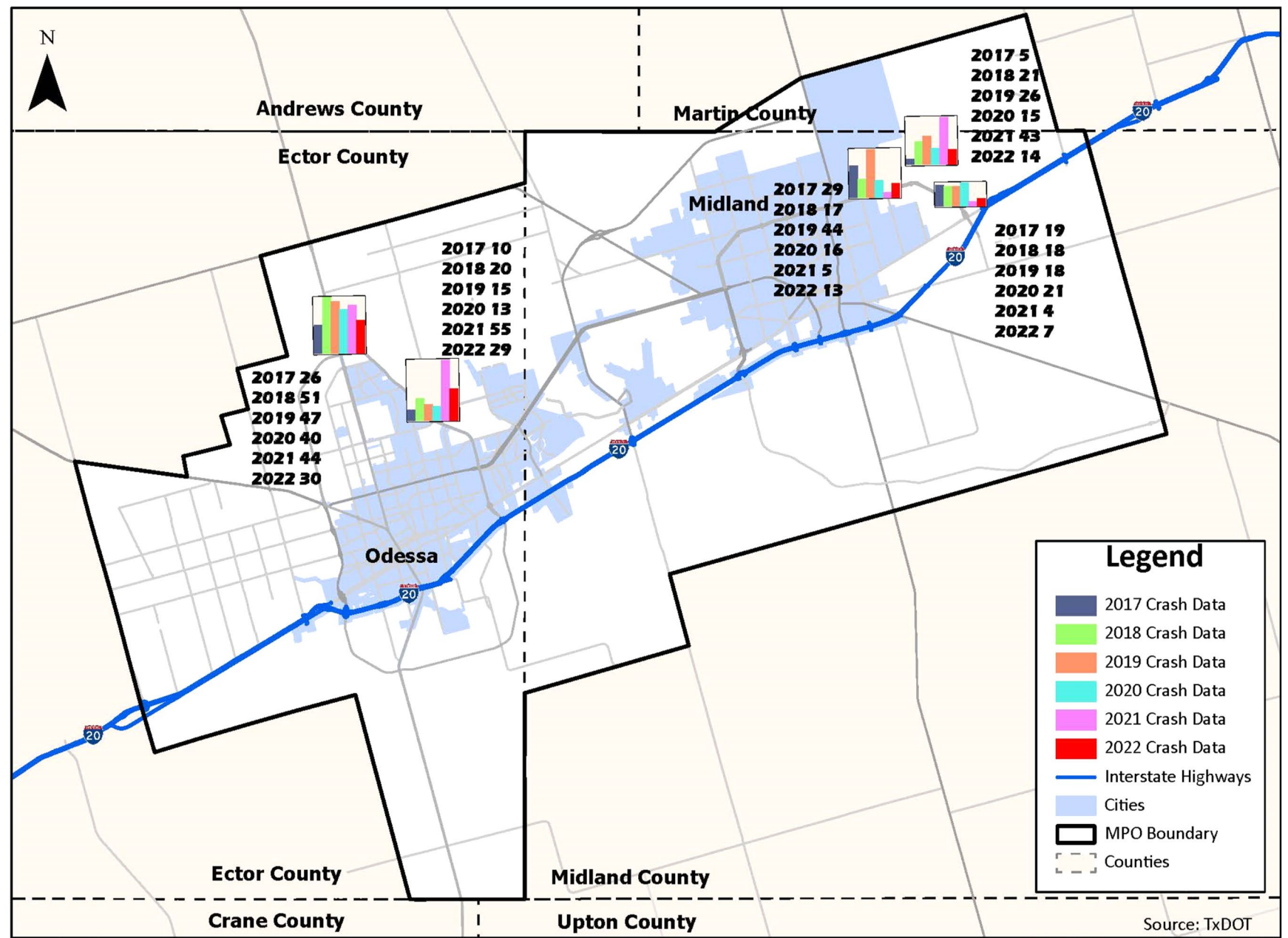
2018 Major Investments Congestion



0 2.25 4.5 9 Miles

5-Year Travel Time Index Data for 2018 Major Investments

2018 Major Investments Crash Data



Source: TxDOT

0 2.25 4.5 9 Miles

6-Year Crash Data for 2018 Major Investments



This map was developed by Permian Basin MPO for the purpose of aiding in regional transportation planning decisions and is not warranted for any other use. No warranty is made by Permian Basin MPO regarding its accuracy or completeness.

Questions?